

Torch and Shield





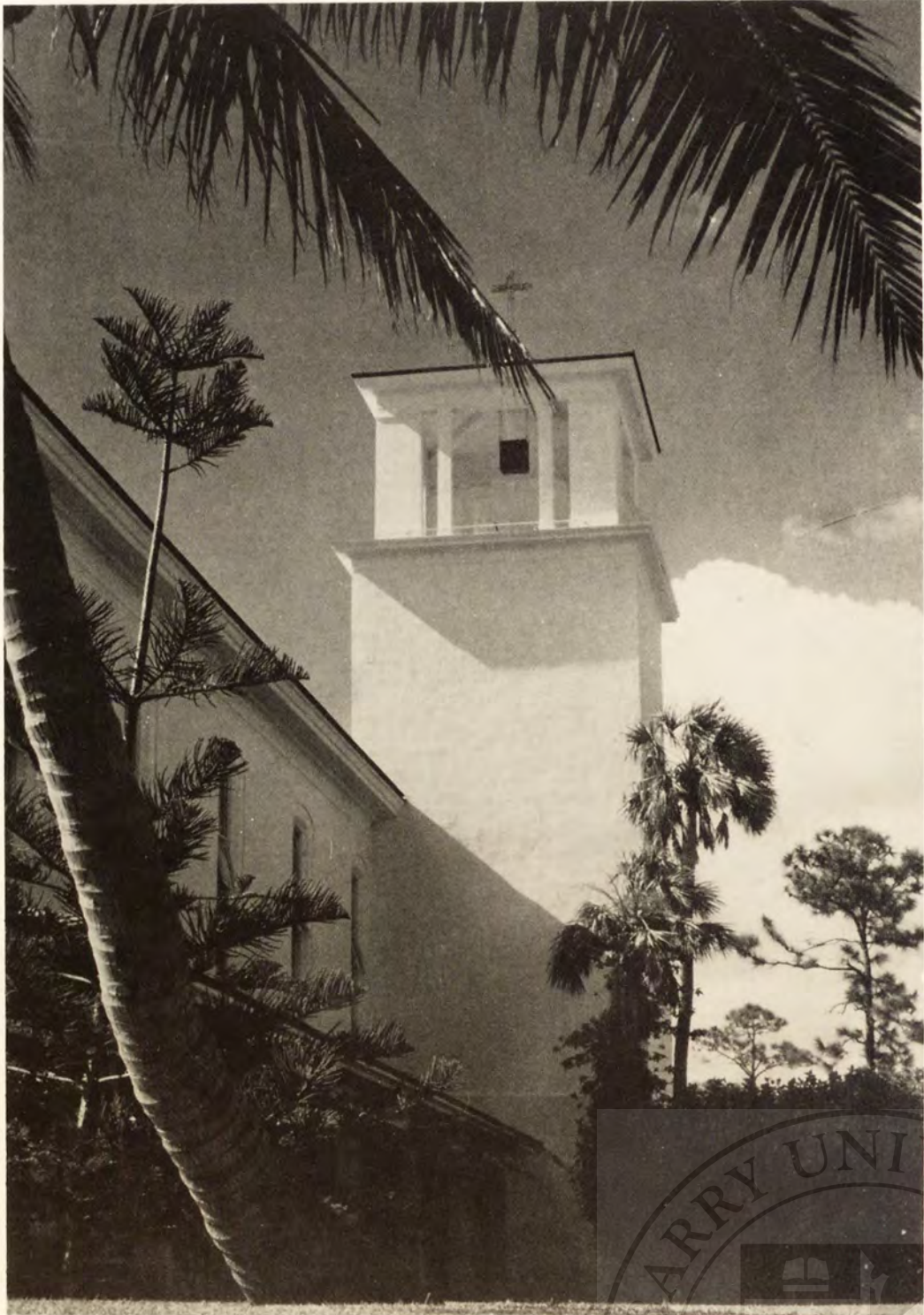
UNIVERSITY OF FLORIDA
1940



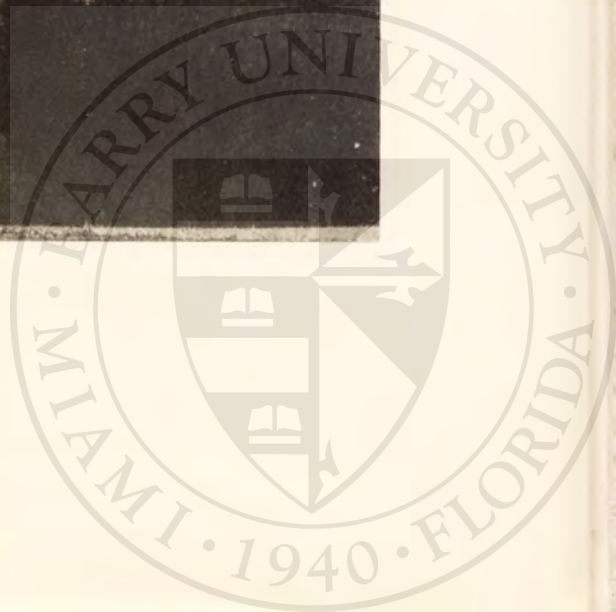
'54

Torch and Shield





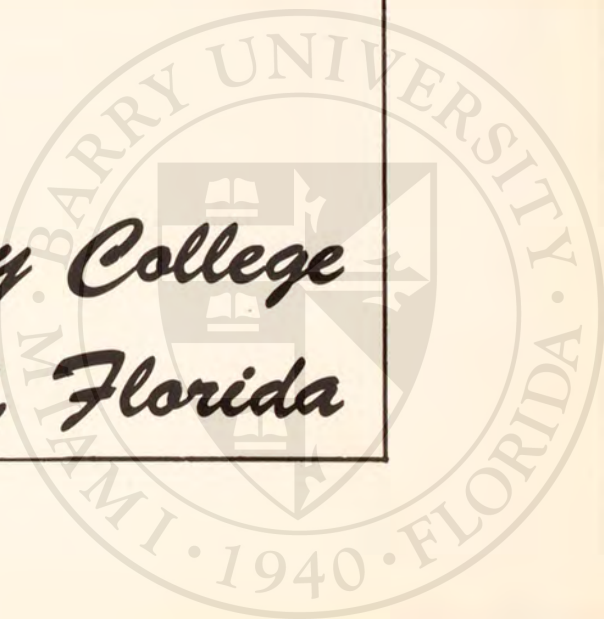
COR JESU CHAPEL



Torch and Shield

1954

Barry College
Miami, Florida



Dedication

. . . To the Mother of God, gloriously reigning Queen of Heaven and Queen of our hearts, we wish to express our devotion and gratitude. In this, her year, it is our privilege to dedicate the *Torch and Shield* to Mary, and under her, to our beloved parents.

THE STAFF





Our Lady's Statue
COR JESU CHAPEL

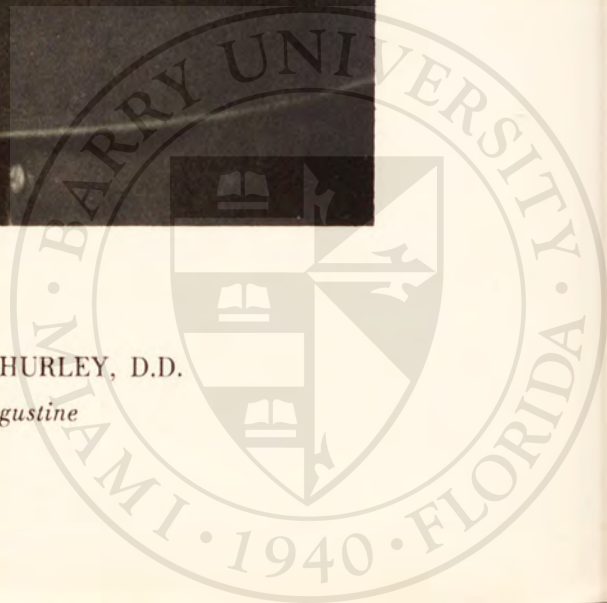




His Grace

THE MOST REVEREND JOSEPH P. HURLEY, D.D.

Archbishop, Bishop of Saint Augustine

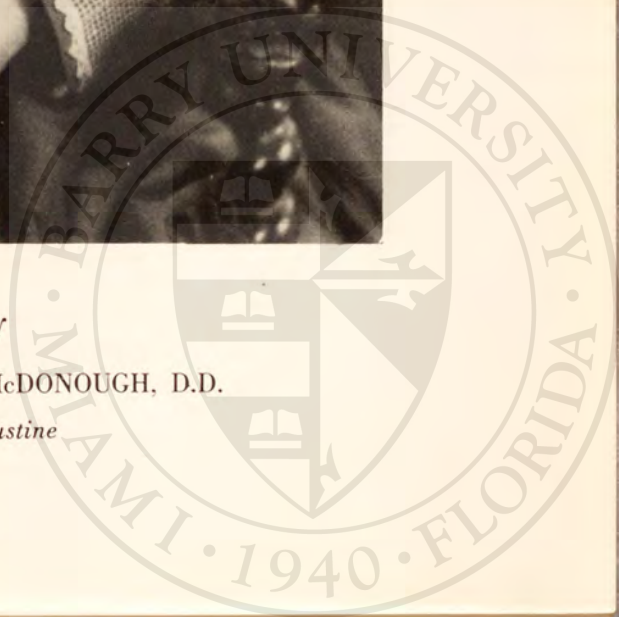




His Excellency

THE MOST REVEREND THOMAS J. McDONOUGH, D.D.

Auxiliary Bishop of St. Augustine



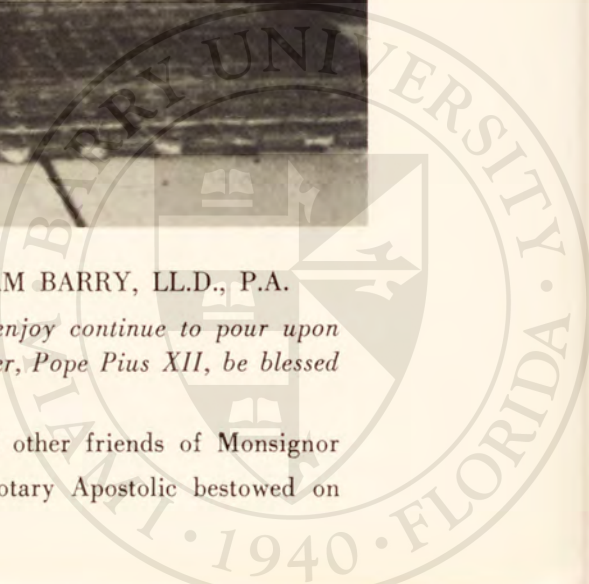
Congratulations...



THE RIGHT REVEREND MONSIGNOR WILLIAM BARRY, LL.D., P.A.

"May the good God Who gave you the heritage you enjoy continue to pour upon you His special grace and love . . . May the Holy Father, Pope Pius XII, be blessed in the honors He has bestowed on you, his son . . ."

The students of Barry Collège join the hundreds of other friends of Monsignor Barry in congratulating him on the honor of Protonotary Apostolic bestowed on him by the Holy See in June, 1953.

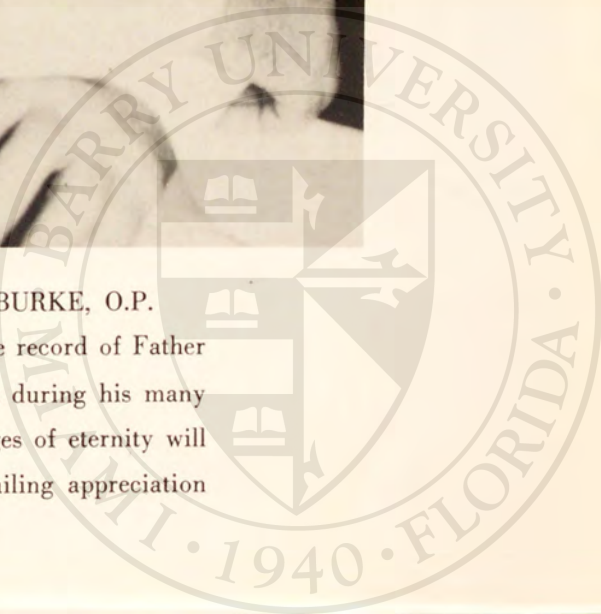


In Appreciation



THE VERY REVEREND CYRIL W. BURKE, O.P.

Only the annals of heaven contain the true record of Father Burke's solid good works and loyal support during his many years at Barry College. Only the timeless ages of eternity will be long enough to express to him our unflinching appreciation and unceasing gratitude.





ANGELICUS HALL

Campus

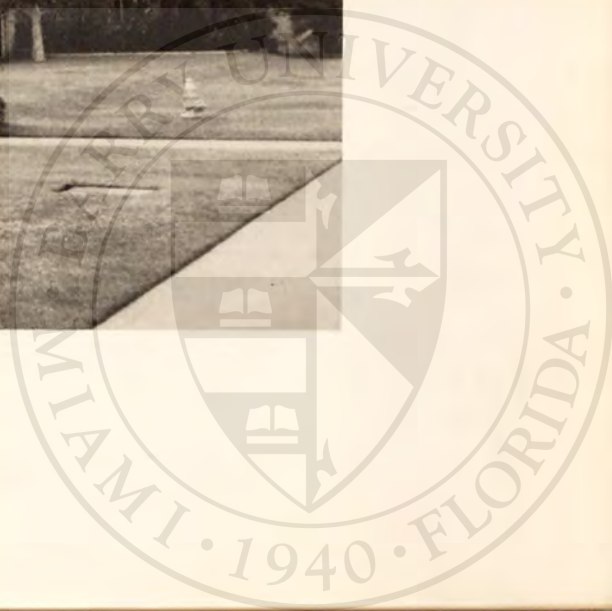
COR JESU CHAPEL



ROSA MYSTICA HALL



MARIS STELLA HALL

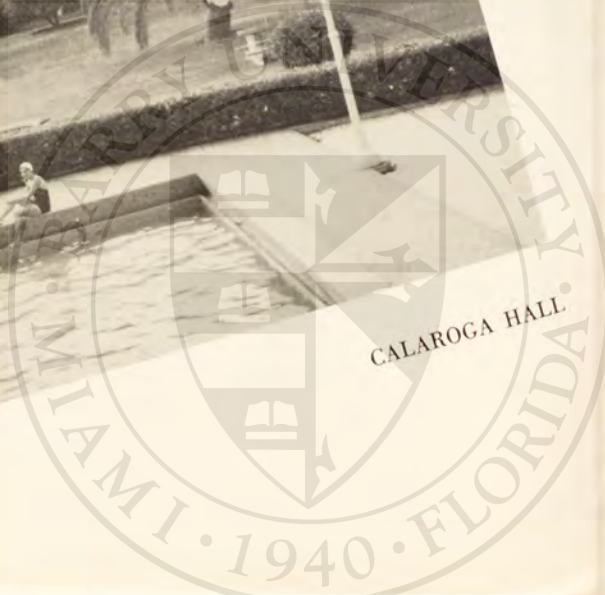




STELLA MATUTINA HALL



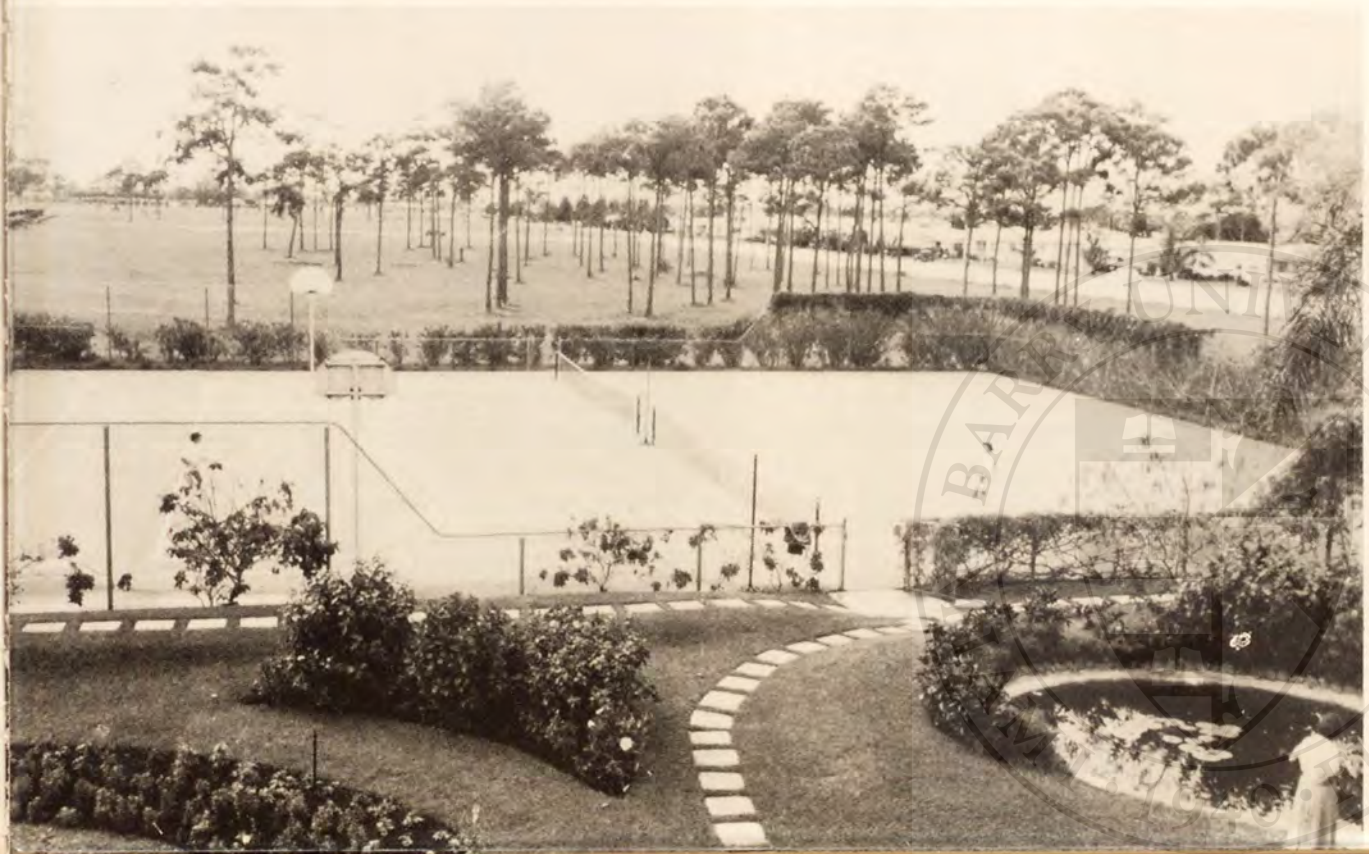
CALAROGA HALL





PENAFORT POOL

TENNIS COURTS—ANGELICUS GARDEN



Faculty

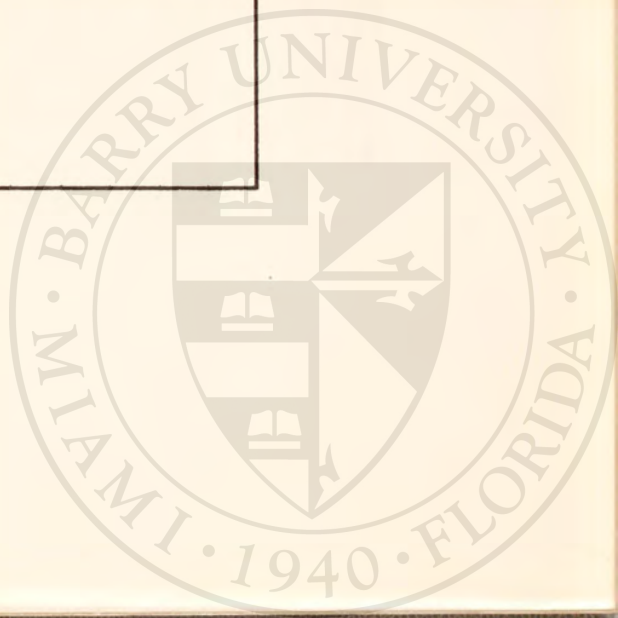
Tireless effort, consistent instruction, inspiring example—these are the riches bestowed upon every Barry student by our beloved faculty. The Dominican Sisters of Adrian, Michigan, under the guidance of Mother Mary Gerald, O.P., founder and president of the college, are a powerful instrument for the promotion of Christian education and culture in Florida's first Catholic college for women.

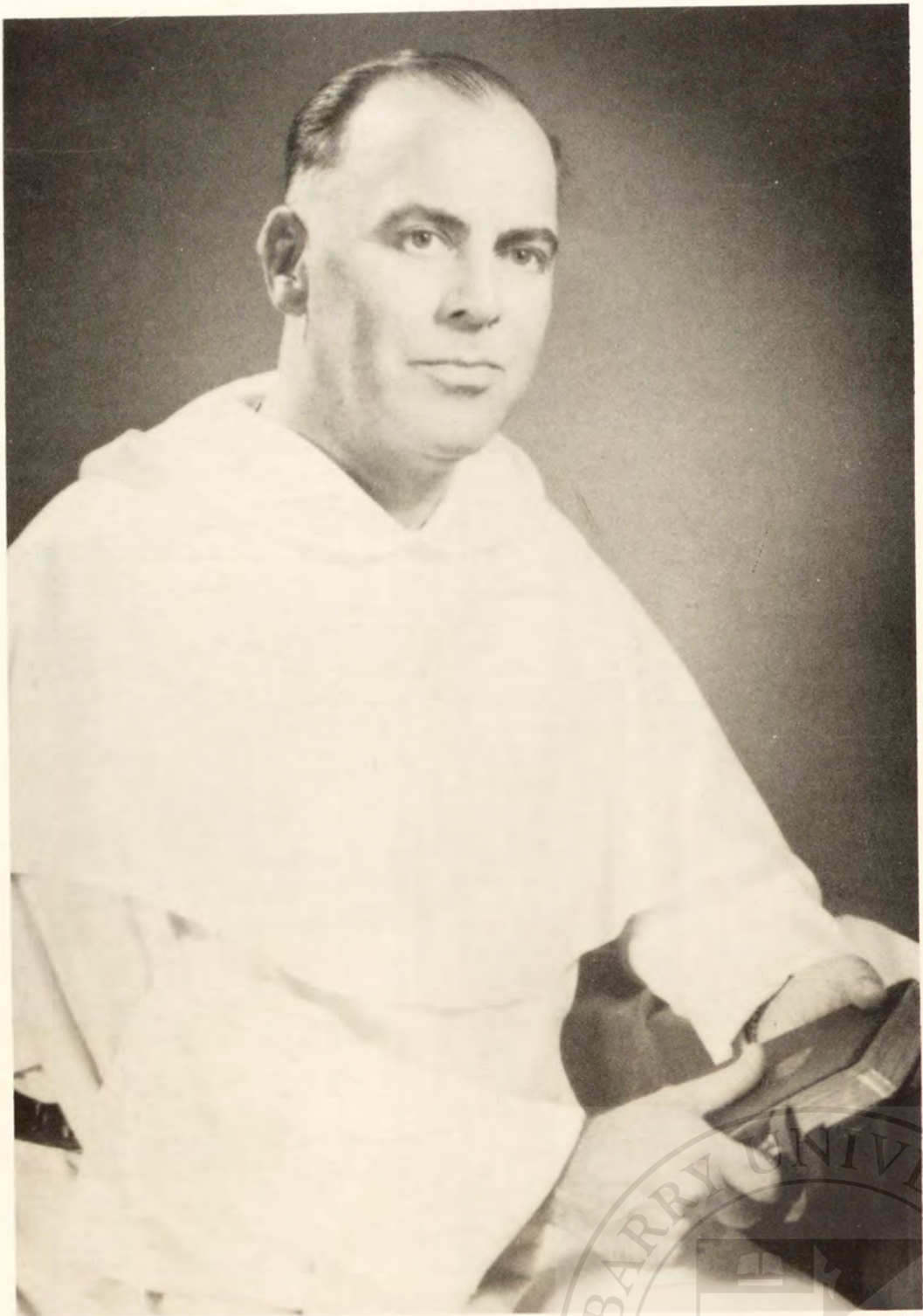
Our devoted teachers give sympathetic and individual attention to all problems concerning the scholastic achievements, the health and happiness of each student. Their simplicity, unselfishness and deep love for Our Lord and His Blessed Mother have greatly influenced us. They translate the faith that is in them into deeds and actions that are in conformity with the spirit of Christ and calculated to win the world to Him.





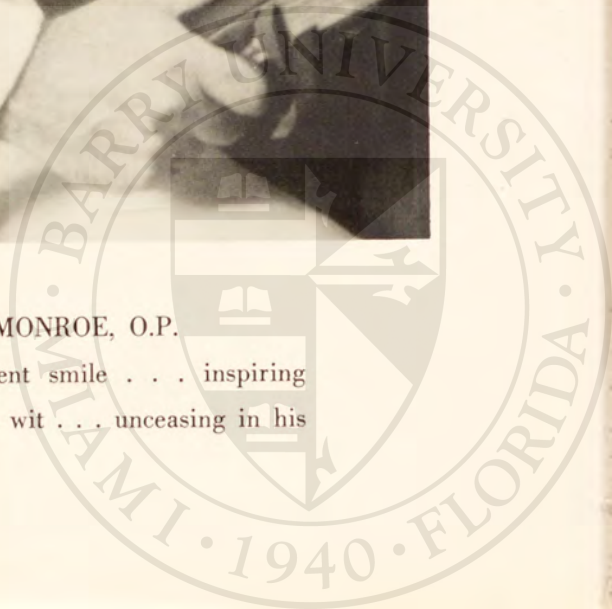
Seat of Wisdom

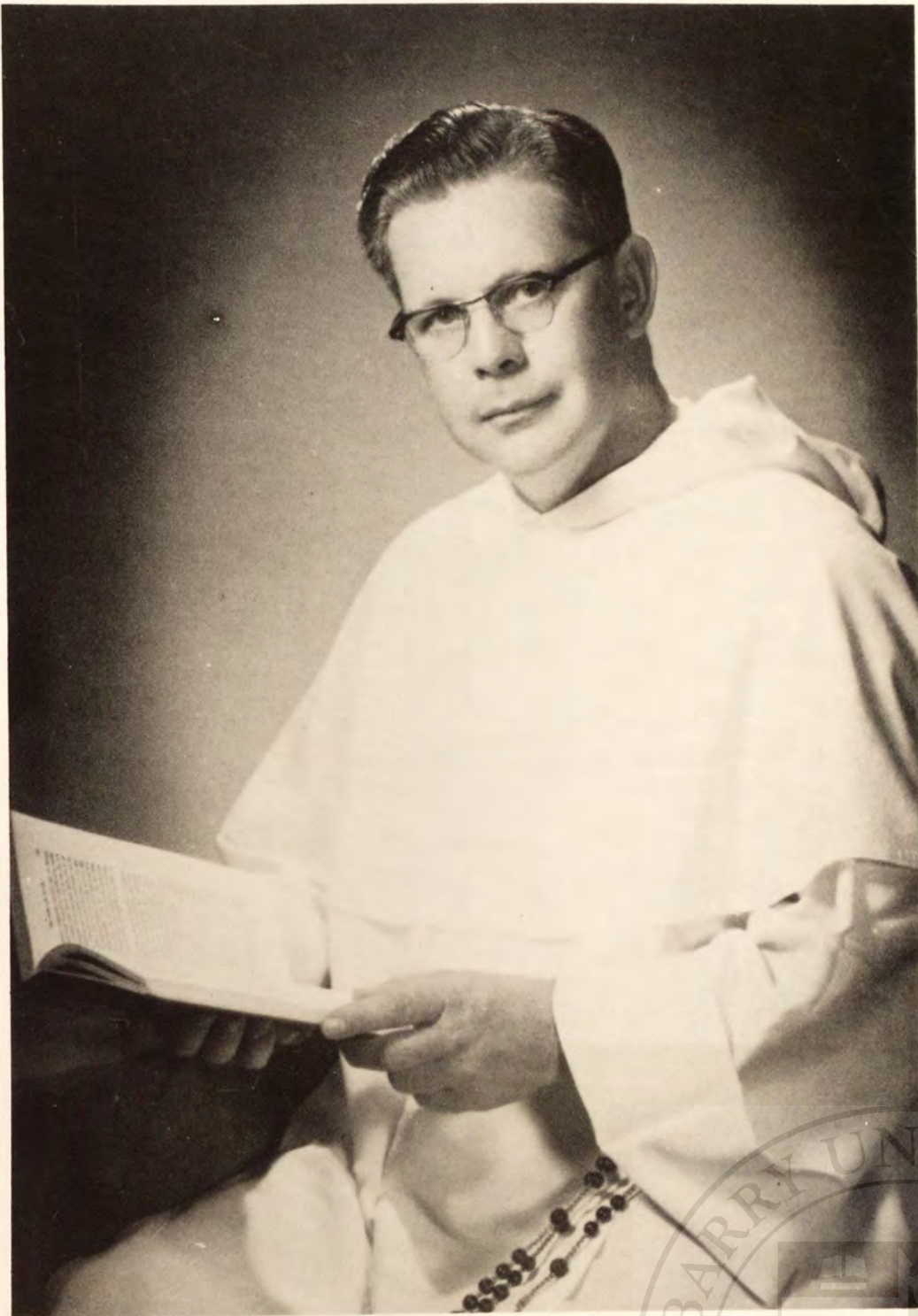




THE REVEREND JOHN F. MONROE, O.P.

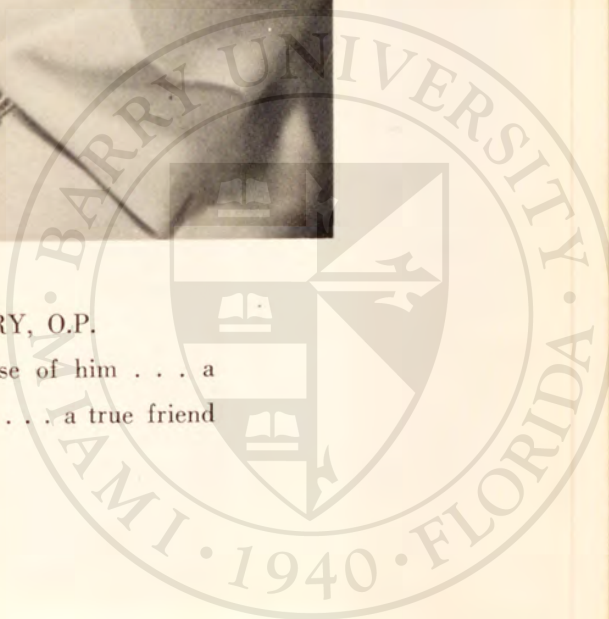
Our new chaplain with an ever-present smile . . . inspiring sermons . . . helpful guidance . . . quick wit . . . unceasing in his efforts for our alma mater.





THE REVEREND LOUIS M. O'LEARY, O.P.

A better understanding of St. Thomas because of him . . . a
rollicking laugh . . . profound thoughts in class . . . a true friend
. . . a cheery "Good Morning!"



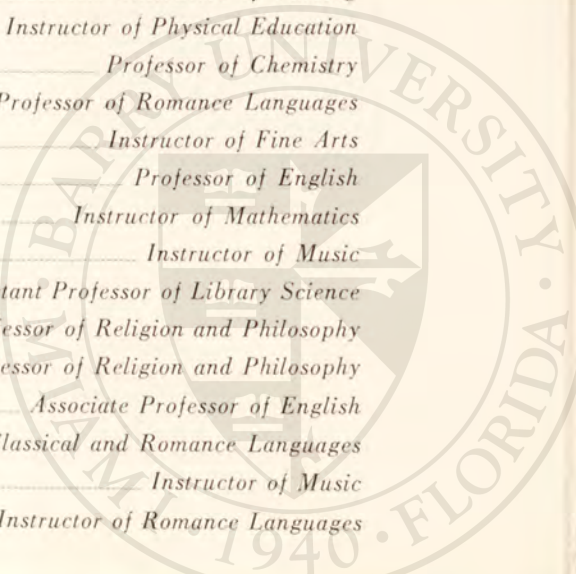


ADMINISTRATION

The Reverend Mother Mary Gerald, O.P.	President
Sister Mary Edmund, O.P.	Vice President and Business Manager
Sister Mary Dorothy, O.P.	Dean
Sister Mary Alice, O.P.	Associate Dean
Sister Mary Williamine, O.P.	Registrar
Sister Eugenia Marie, O.P.	Treasurer
Sister Michael James, O.P.	Librarian
Sister Helen Margaret, O.P.	Director, School of Nursing

FACULTY

Sister Mary Alice, O.P.	Assistant Professor of English
Sister Ann Charles, O.P.	Assistant Professor of Chemistry and Physics
Sister Mary Arnold, O.P.	Instructor of Social Sciences
Sister Mary Dorothy, O.P.	Professor of Education
Sister Mary Edmund, O.P.	Professor of Religion and English
Sister Mary Elaine, O.P.	Instructor of Social Sciences
Sister Eugenia Marie, O.P.	Instructor of Secretarial Science
Sister Mary Eulalia, O.P.	Assistant Professor of Home Economics
Sister Grace Alma, O.P.	Instructor of English and Speech
Sister Helen Margaret, O.P.	Instructor of Nursing
Miss Margaret Husson, B.S.	Instructor of Physical Education
Sister Mary Jane, O.P.	Professor of Chemistry
Sister Jean Marie, O.P.	Assistant Professor of Romance Languages
Sister Mary Jeannine, O.P.	Instructor of Fine Arts
Sister Mary Jerome, O.P.	Professor of English
Sister Marie Loretta, O.P.	Instructor of Mathematics
Sister Maura, O.P.	Instructor of Music
Sister Michael James, O.P.	Assistant Professor of Library Science
The Reverend John F. Monroe, O.P.	Professor of Religion and Philosophy
The Reverend Louis M. O'Leary, O.P.	Professor of Religion and Philosophy
Sister Mary Paul, O.P.	Associate Professor of English
Sister Mary Petronilla, O.P.	Professor of Classical and Romance Languages
Sister Thomas Gertrude, O.P.	Instructor of Music
Sister Mary Williamine, O.P.	Instructor of Romance Languages





MISS MARGARET HUSSON, B.S.
Instructor in Physical Education



MISS MARY ANN HURLEY, R.N.



MISS JOAN MARIE WELLS, R.N.

Campus Nurses

The Senior Class

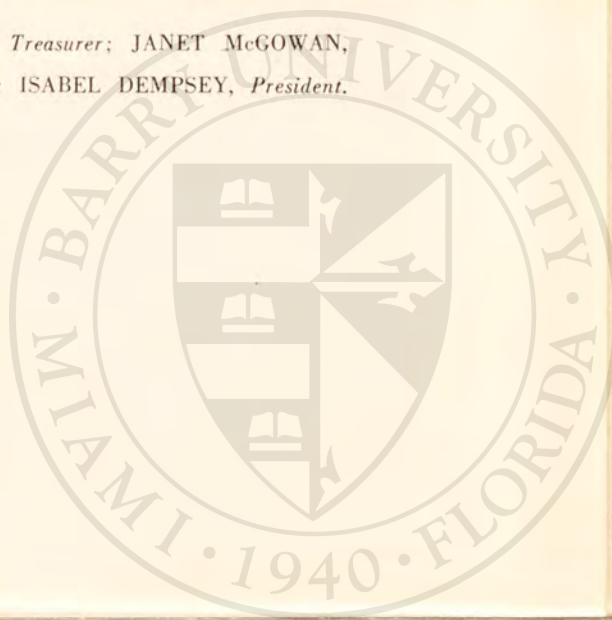
Unity, love, and loyalty compound the spirit of the Class of '54. From entrance exams to comprehensives, from the Freshman Hop to the Senior Prom, their enthusiastic interest in everyone and everything has made them the darlings of the campus. Always to be cherished are their memories of lasting friendships made with faculty members and fellow students, and strengthened through the efforts and fun of planning class days, picnics, and proms. Together in prayer, in work, and in play, theirs has been a college life filled with the truest Barry spirit.



Senior Class Officers



ROSEMARY GEYER, *Secretary*; CATHERINE WODKTE, *Treasurer*; JANET MCGOWAN, *Social Chairman*; CONSTANCE BALDWIN, *Vice President*; ISABEL DEMPSEY, *President*.



Lois Constance Baldwin, B. S.

Miami, Florida
Caverna High School
Horse Cave, Kentucky

MAJOR: Education
MINORS: English, Journalism, Spanish

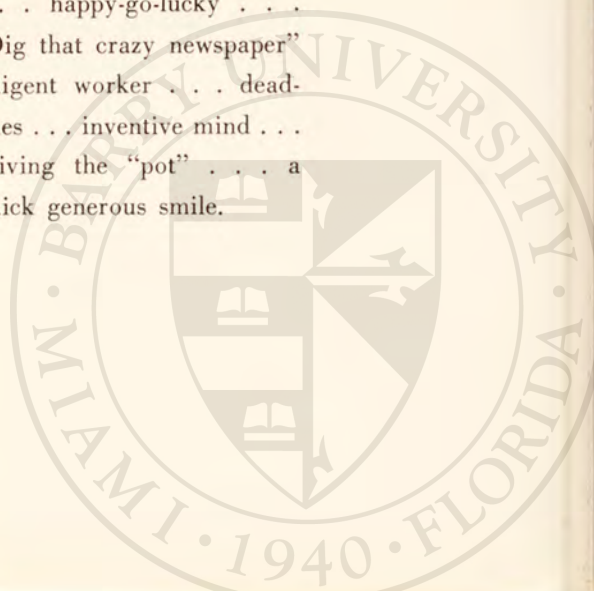
ACTIVITIES:

Student Council 4
Class Vice President 4
Athletic Association 1, 2
Angelicus 1, 2, 3, 4; Associate Editor 2, 3;
Editor 4

Torch and Shield 2
Press Club 3, 4; President 4
Florida Club 1, 2, 3



"Connee" . . . energy plus
. . . happy-go-lucky . . .
"Dig that crazy newspaper"
diligent worker . . . dead-
lines . . . inventive mind . . .
driving the "pot" . . . a
quick generous smile.





Betty Joe Bostick, B.S.

Ojus, Florida
Miami Edison High School
Miami, Florida

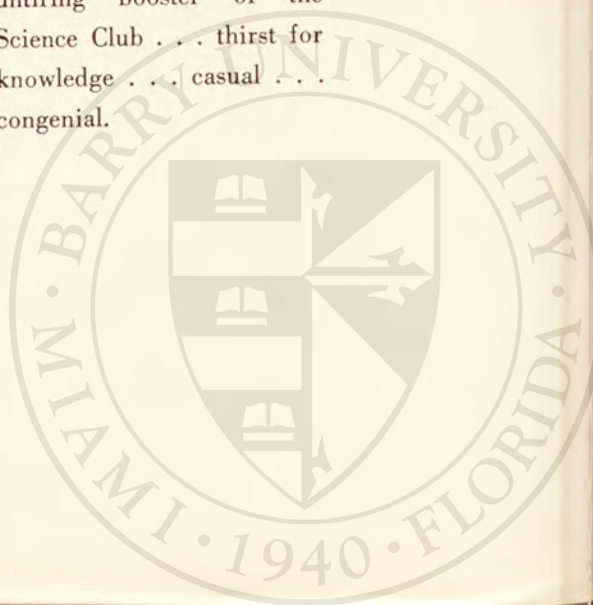
MAJOR: Biology
MINORS: Chemistry, French

ACTIVITIES:

Athletic Association 1, 2
Cecilian Club 4
Florida Club 1, 2, 3, 4; Treasurer 4
Science Club 1, 2, 3, 4; Treasurer 2, President 3, 4



Betty Joe . . . a modern Madame Curie . . . sparkling blue eyes, gracious smile . . . untiring booster of the Science Club . . . thirst for knowledge . . . casual . . . congenial.





Isabel Therese Dempsey, B.S.

New Rochelle, New York
The Ursuline School

Transferred from St. Elizabeth College,
Convent Station, New Jersey in Junior
Year

MAJOR: Dietetics

MINORS: Chemistry, English

ACTIVITIES:

Sodality 3, 4; Council 3

Student Council 4; First Vice-Chairman 4

Lambda Sigma, Campus Honor Society 3, 4

Who's Who Among Students in American

Universities and Colleges 4

Class Treasurer 3

Class President 4

Torch and Shield 4; Managing Editor 4

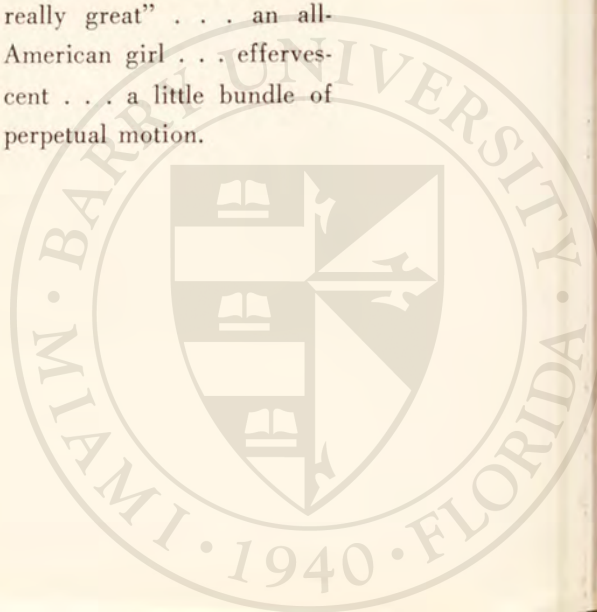
Tara Singers 3

Home Economics Club 3, 4

Cosmos 3, 4



"Terry" . . . dancing feet
. . . a Notre Dame zealot . . .
Caruso's . . . St. E's loss . . .
precise president . . . "It's
really great" . . . an all-
American girl . . . efferves-
cent . . . a little bundle of
perpetual motion.





Joan Anne Gennett, A.B.

Mount Vernon, New York
A. B. Davis High School

MAJOR: Spanish

MINORS: English, Secretarial Science, History

ACTIVITIES:

Sodality 1, 2, 3, 4

Student Council 4

House Council 4; Secretary 4

Mission Council 2, 3, 4

Cor Jesu Choir 2

Beta Kappa Kappa 4

Science Club 1, 2

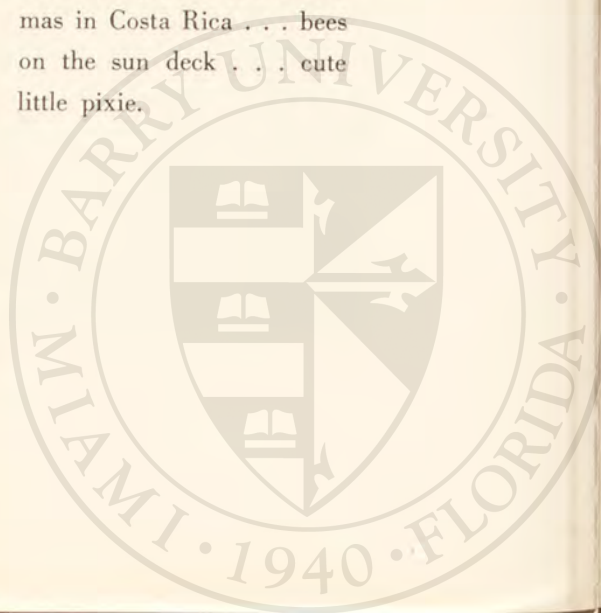
Spanish Club 1, 2, 3

Cosmos 1, 4

Impow 2, 3



New York Spaniard . . .
Yankee fan . . . nomad . . .
"I'm telling you" . . . Christ-
mas in Costa Rica . . . bees
on the sun deck . . . cute
little pixie.





Rosemary Therese Geyer, B.S.

Hamilton, Ohio
Notre Dame High School

MAJOR: Education

MINORS: Secretarial Science, English, Latin

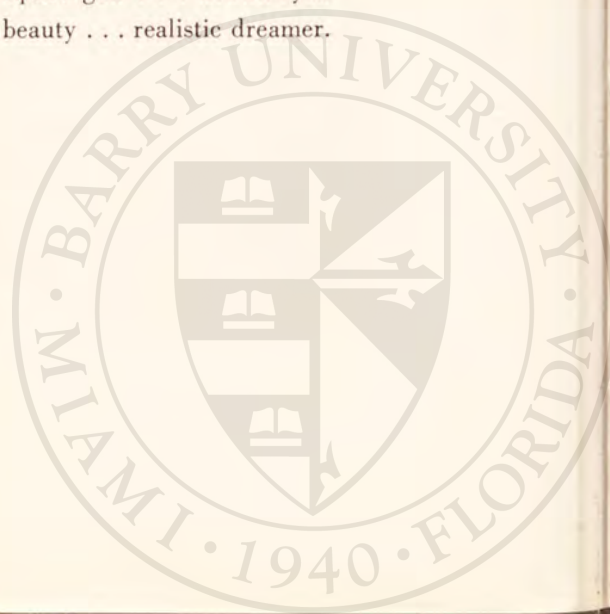
ACTIVITIES:

Sodality 2, 3, 4; Eucharistic Committee Chairman 2; Secretary 3
Student Council 3
Lambda Sigma, Campus Honor Society 1, 2
Class Treasurer 1, 2
Class Vice President 3

Class Secretary 4
Athletic Association 1, 2, 3; Vice President 3
Campus Queen's Court 4
Tara Singers 2
Mission Council 1, 2, 3
Impow 1, 2, 3, 4



Neatness personified . . .
candy from California . . .
daily jaunt to Edison . . .
Notre Dame enthusiast . . .
squirt gun . . . brown-eyed
beauty . . . realistic dreamer.





Mary Emma Grady, B. S.

Jacksonville, Florida
St. Paul's High School

MAJOR: Home Economics

MINORS: English, Chemistry

ACTIVITIES:

Sodality 1, 2, 3, 4; Treasurer 3; Prefect 4
Student Council 4; Honorary Chairman
Lambda Sigma, Campus Honor Society 4
Who's Who Among Students in American
Universities and Colleges 4
Social Chairman 1, 2
Tertiaries 1, 4

Athletic Association 1, 2, 3, 4; Treasurer 4
Torch and Shield 4
House Council 1

Cor Jesu Choir 2, 3, 4

Social Board 1, 2

Tara Singers 4

Playhouse 1, 2, 3, 4; Chairman 3

Mission Council 1, 2, 3, 4; Treasurer 2

Confraternity of Christian Doctrine 1

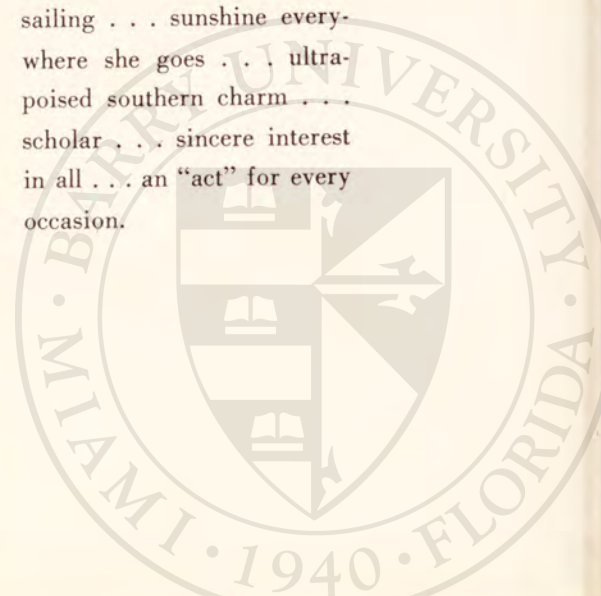
Home Economics Club 1, 2, 3, 4; Vice President 2; President 3

Spanish Club 1

Florida Club 1, 2, 3, 4



"Em" . . . exquisite fashions
. . . no task too big . . . in-
spiring . . . ideal Sodality
Prefect . . . snowballs and
sailing . . . sunshine every-
where she goes . . . ultra-
poised southern charm . . .
scholar . . . sincere interest
in all . . . an "act" for every
occasion.





Julie C. Hall, A.B.

Palm Beach, Florida
Rosarian Academy
West Palm Beach, Florida

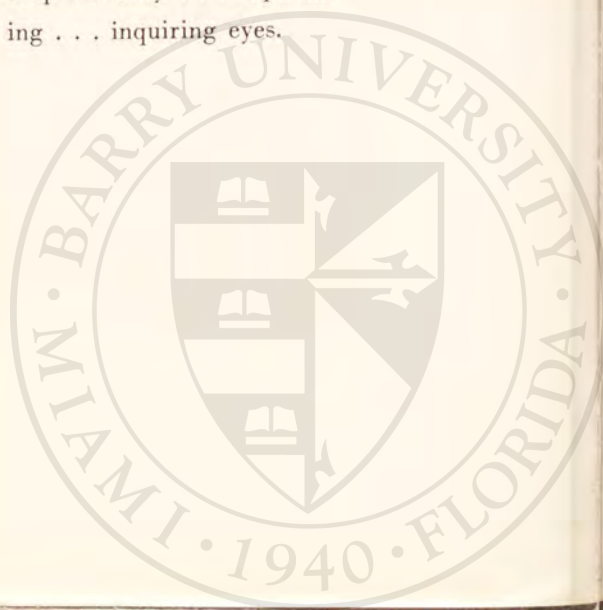
MAJOR: Sociology
MINORS: Education, English

ACTIVITIES:

Sodality 1, 2, 3, 4	Sociology Club 3, 4
House Council 4	Choric Cameos 3
Angelicus 2, 3, 4; Photography Editor 3	Cosmos 2
Press Club 3, 4; Social Chairman	New England Club 1, 3, 4



Julie . . . artistic . . . time
for everyone . . . ready gig-
gle . . . Newfoundland . . .
deep sincerity . . . captivat-
ing . . . inquiring eyes.





Mary Agnes Hanzo, B.S.

Miami, Florida
Gesu High School

Transferred from Florida State University in
Junior Year

MAJOR: Biology
MINORS: Chemistry, English

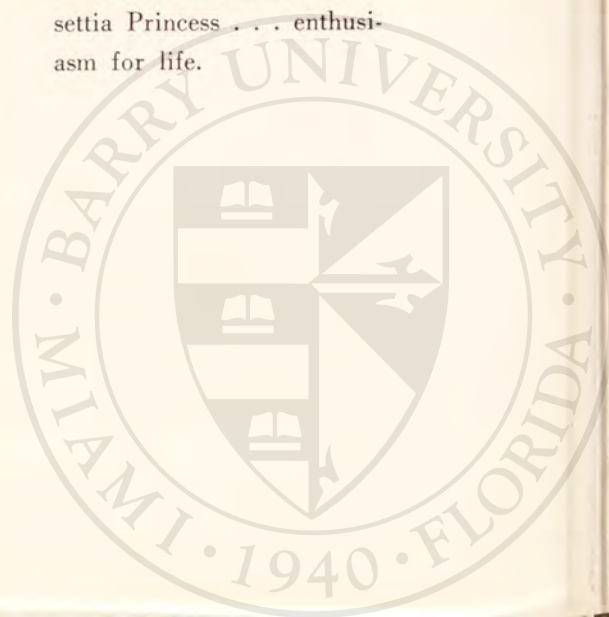
ACTIVITIES:

Sodality 3, 4
Tara Singers 4

Science Club 3, 4; Vice President 4
Florida Club 3, 4; Treasurer 3; President 4



Spring tonic . . . desire to
please . . . Mary Agnes . . .
science devotee . . . golden-
haired sweetheart . . . Poin-
settia Princess . . . enthusi-
asm for life.





Winona Hennebry, A.B.

La Grange, Illinois
Nazareth Academy

Transferred from Rosary College, River
Forest, Illinois in Sophomore Year

MAJOR Sociology

MINORS: History, Philosophy

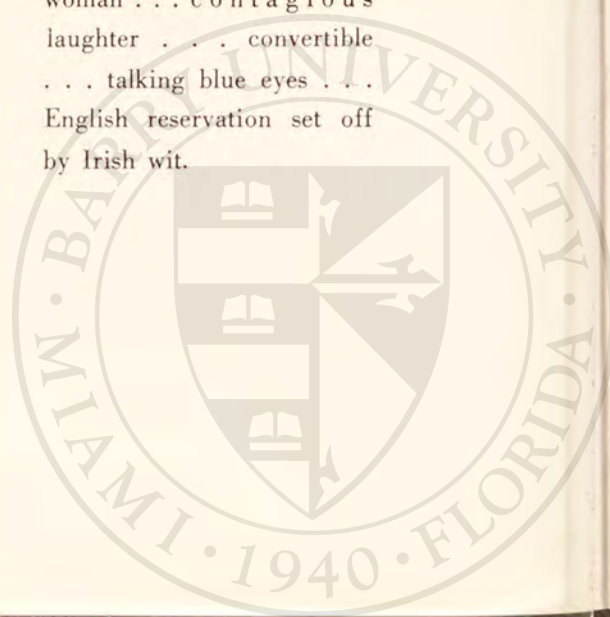
ACTIVITIES:

Sodality 4
Athletic Association 3, 4
House Council 4

Social Board 4
Sociology Club 4
Illinois Club 3, 4; President 3



Culbertson's advisor . . .
ballet perfectionist . . . "We
want Winona" . . . sports-
woman . . . contagious
laughter . . . convertible
. . . talking blue eyes . . .
English reservation set off
by Irish wit.





Shirley Ann Hodge, A.B.

Jacksonville, Florida
St. Paul's High School

MAJOR: Sociology

MINORS: Secretarial Science, English

ACTIVITIES:

Sodality 1, 2, 3, 4; Eucharistic Committee
Chairman 3, 4

Student Council 2, 3, 4

Lambda Sigma, Campus Honor Society 1

Who's Who Among Students in American
Universities and Colleges 4

Campus Queen 4

Class Vice President 2

Tertiaries 1, 4

Athletic Association 1, 2, 3, 4; Angelicus
2, 3

Torch and Shield 4

Tara Singers 4

Mission Council 1, 2, 3, 4; Vice-Chairman 2,
Secretary 3

House Council 1, 3; Chairman 3

Social Board 4

Cor Jesu Choir 3, 4

Playhouse 1, 2, 3, 4; Vice-Chairman 3

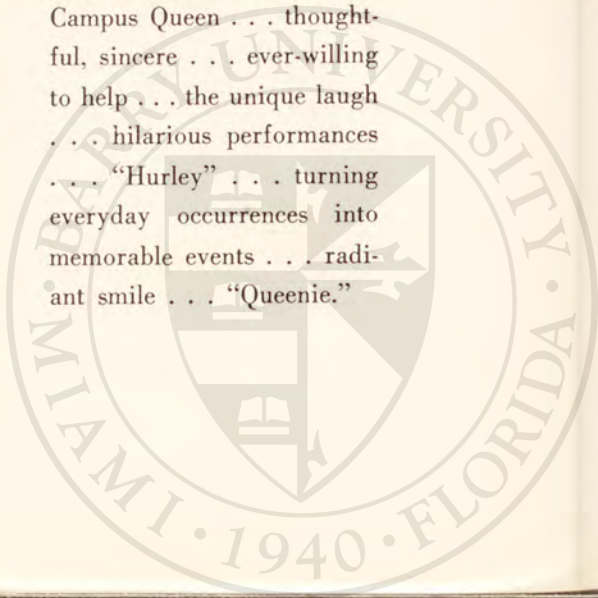
Confraternity of Christian Doctrine 1

Sociology Club 3, 4

Florida Club 1, 2, 3, 4



"Shirl" . . . exponent of the charm, beauty and inbred elegance of a real Barry Campus Queen . . . thoughtful, sincere . . . ever-willing to help . . . the unique laugh . . . hilarious performances . . . "Hurley" . . . turning everyday occurrences into memorable events . . . radiant smile . . . "Queenie."





Patricia Rose Huml, A.B.

Shaker Heights, Ohio
Shaker Heights High School

MAJOR: Spanish

MINORS: English, French, History

ACTIVITIES:

Athletic Association 1, 2

Angelicus 1, 2, 3, 4; Photography Assistant
2; Advertising Manager 3; Advertising
Consultant 4

Torch and Shield 3, 4; Photography Editor
3; Advertising Manager 4

Beta Kappa Kappa 1, 2, 4; Vice President 4

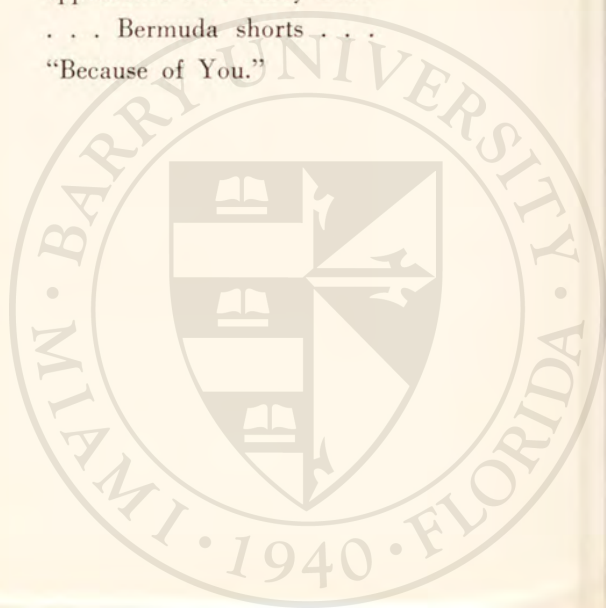
Science Club 1, 2, 3

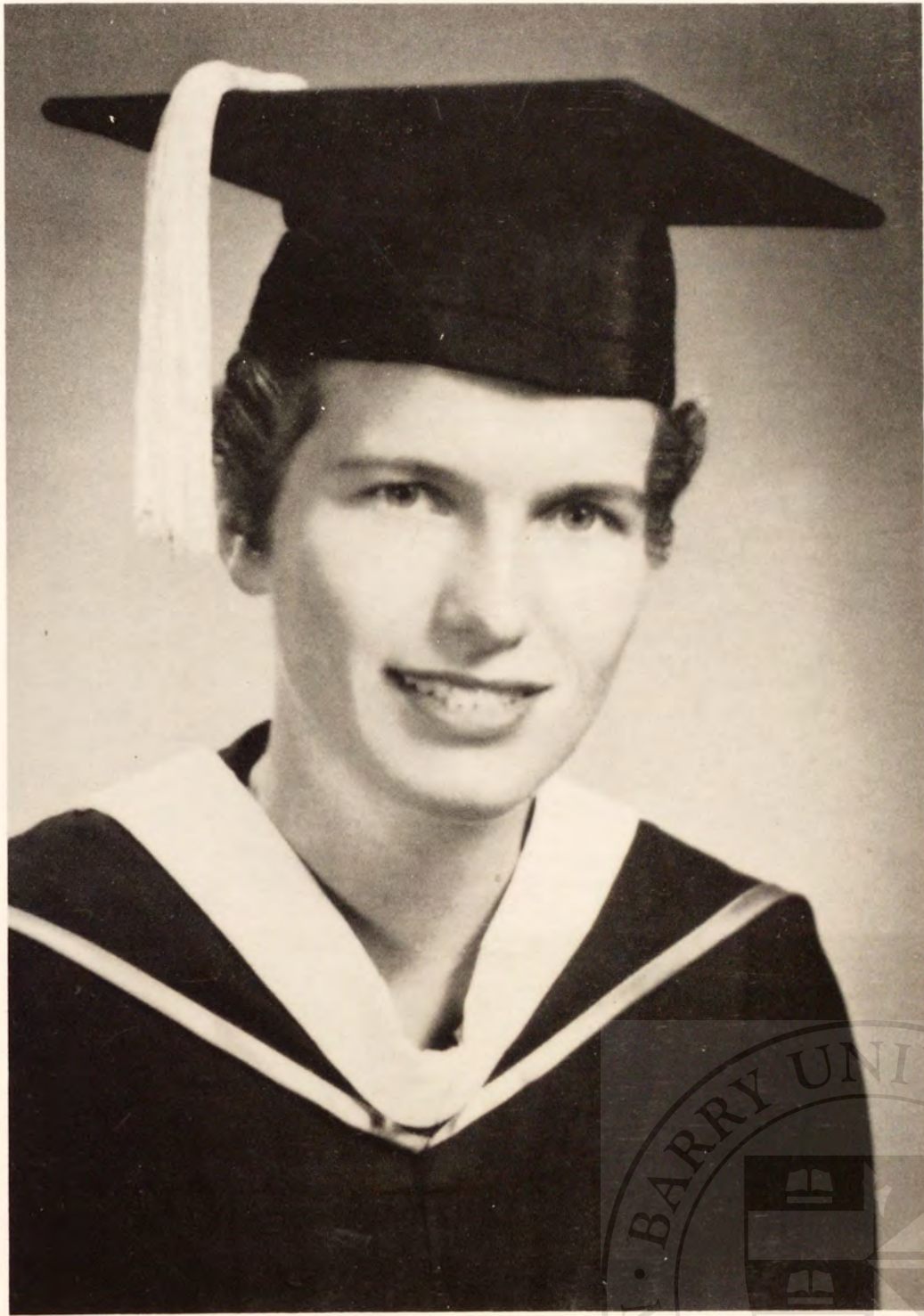
Impow 1, 2; Secretary 2

School Publicity Editor 3



"Scotty" . . . Music, maestro,
please . . . the tailored wo-
man . . . famed for courtly
appearance . . . Barry Bard
. . . Bermuda shorts . . .
"Because of You."





Margaret M. Keith, A.B.

San Jose, Costa Rica
The Beard School
Orange, New Jersey

MAJOR: History
MINORS: Secretarial Science, English, Spanish

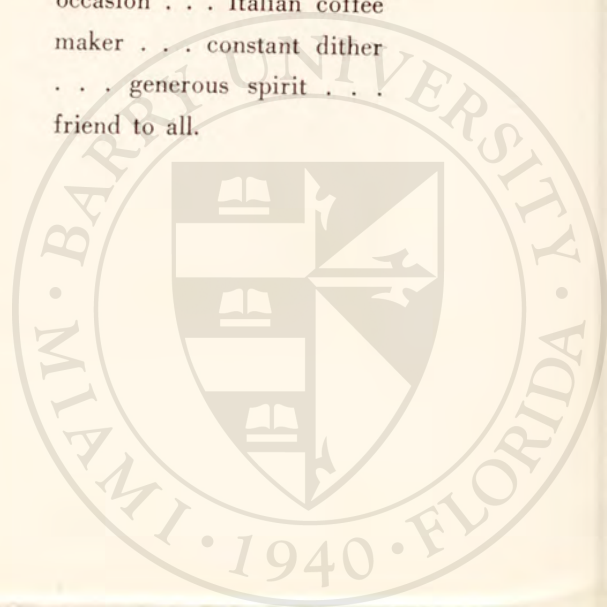
ACTIVITIES:

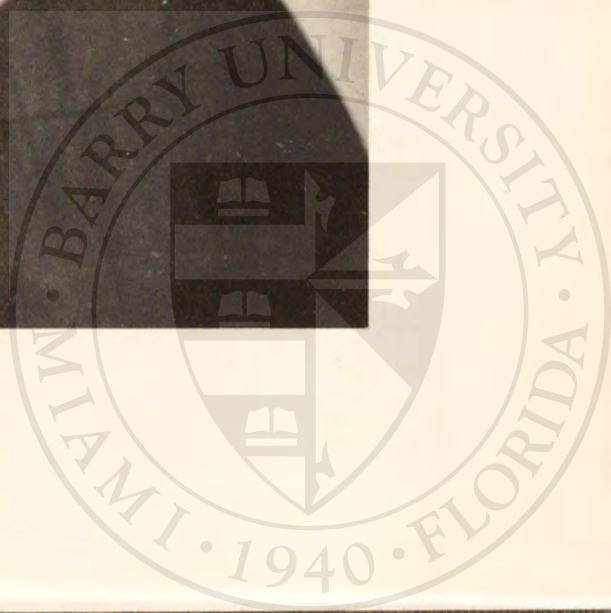
Sodality 2, 3, 4
Mission Council 1, 2, 3, 4; Vice-Chairman 3
Science Club 2

Spanish Club 1, 2, 3, 4; President 4
Foreign Students Club 2, 3, 4; Secretary-Treasurer 3



Peggy . . . "Manana" . . .
the laughing gremlin . . .
excuses and stories for every
occasion . . . Italian coffee
maker . . . constant dither
. . . generous spirit . . .
friend to all.





Barbara Ann Kusmick, A.B.

Clifton, New Jersey
Benedictine Academy
Paterson, New Jersey

MAJOR: English
MINORS: Education, Journalism

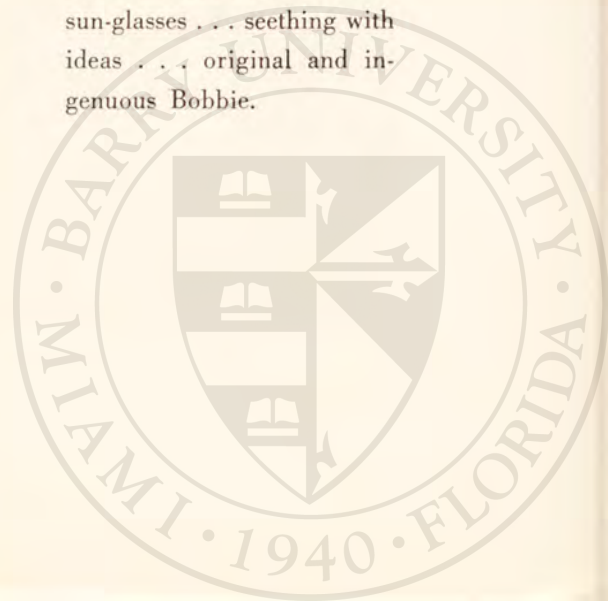
ACTIVITIES:

Sodality 1
Student Council 3, 4
Social Chairman 3
Athletic Association 1

Angelicus 1, 2, 3, 4; Editor 3
Social Board 3
Cosmos 1, 2, 3, 4
Press Club 3; President 3



Bobbie . . . "C'est la vie!"
. . . pocketbook specialist . . .
little known facts from the
outside world . . . reversible
sun-glasses . . . seething with
ideas . . . original and in-
genious Bobbie.





Esther Dolores Lopez, A.B.

Cabo Rojo, Puerto Rico
Coral Gables Senior High School
Coral Gables, Florida

MAJOR: French

MINORS: English, Spanish, Biology

ACTIVITIES:

Sodality 1, 2, 3, 4

Lambda Sigma, Campus Honor Society 2, 3, 4

Athletic Association 1, 2, 3

Campus Queen's Court 4

Mission Council 1, 2, 3, 4

Beta Kappa Kappa 4

Science Club 1, 2, 3

Spanish Club 1, 2, 3, 4

Foreign Students Club 3, 4

Florida Club 1, 2



Esther . . . gay and elfin . . .
the weekend traveler . . .
"Alexander Graham's little
Belle" . . . precise nature
. . . polyglot.





Loretta Mary McClellan, A.B.

Miami, Florida
St. Mary's High School

MAJOR: English
MINORS: History, Education

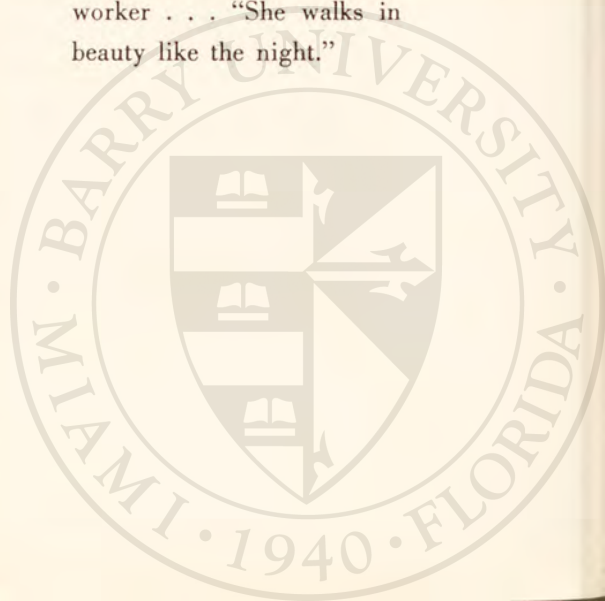
ACTIVITIES:

Sodality 1, 2, 3, 4; Council 3, 4; Our Lady's
Committee Chairman 4
Athletic Association 1, 2
Angelicus 1

Beta Kappa Kappa 3, 4; President 3, 4
Science Club 2
Florida Club 1, 2; Secretary 2



Loretta . . . faith in life and
all it brings . . . poised and
nonchalant . . . midnight
snacks . . . determined . . .
stand-by chauffeur . . . hard-
worker . . . "She walks in
beauty like the night."





Janet Marie McGowan, A.B.

St. Paul, Minnesota
Visitation Convent

MAJOR: Art

MINORS: English, History, Philosophy

ACTIVITIES:

Sodality 1, 4

Student Council 1

Who's Who Among Students in American
Universities and Colleges 4

Class President 1

Social Chairman 4

Athletic Association 1, 2, 4

Campus Queen's Court 4

Mission Council 4; Social Board 4; Impow
1, 2, 4



Janet . . . "two-toned M.C."
. . . intriguing individualist
. . . the artist . . . the en-
tertainer . . . "McGoo" . . .
a dance, a song . . . striking
good looks . . . fond of peo-
ple and life in general . . .
curly.





Patricia Ann Mies, A.B.

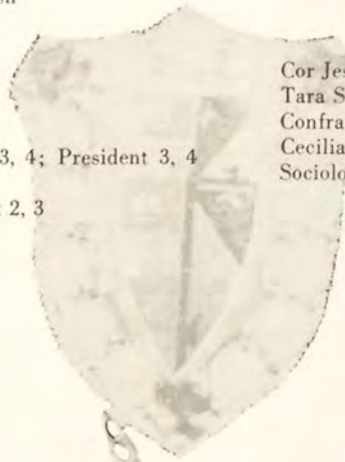
Decatur, Indiana
Decatur Catholic High School

MAJOR: Sociology
MINORS: Spanish, English

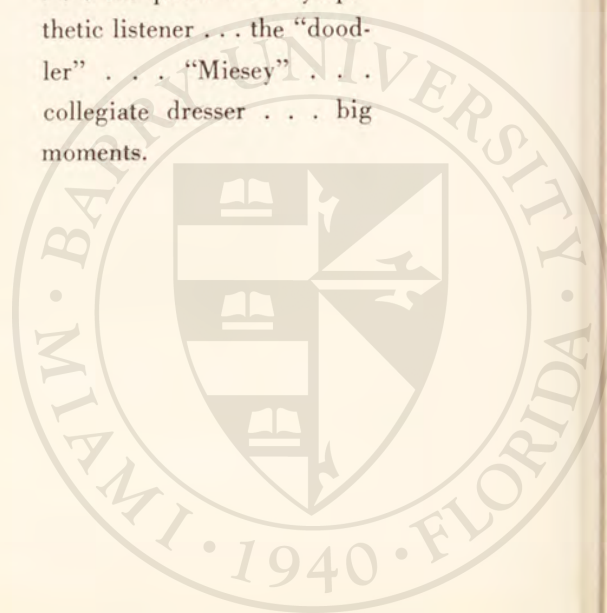
ACTIVITIES:

Sodality 1, 2, 3, 4
Student Council 2, 3, 4
Tertiaries 4
Athletic Association 1, 2, 3, 4; President 3, 4
Campus Queen's Court 4
Impow 1, 2, 3, 4; President 2, 3

Cor Jesu Choir 1, 2, 3, 4
Tara Singers 1, 2, 3, 4
Confraternity of Christian Doctrine 1
Cecilian Club 3
Sociology Club 3, 4



Patty . . . witchcraft . . .
songster . . . "My sediments
exactly" . . . quiet observer
. . . the patch . . . sympa-
thetic listener . . . the "dood-
ler" . . . "Miesey" . . .
collegiate dresser . . . big
moments.





Anne Marie Morley, A.B.

Boston, Massachusetts
Saint Aidan's School
Brookline, Massachusetts

MAJOR: English
MINOR: Philosophy, History

ACTIVITIES:

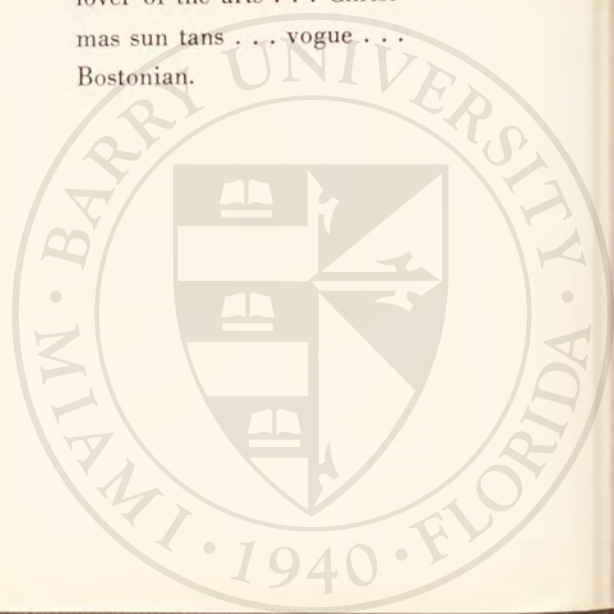
Sodality 1, 2, 3, 4
Athletic Association 1, 2, 4
Torch and Shield 3, 4; Editor 3
Playhouse 1
Mission Council 1, 2, 3, 4; Vice President 4

Confraternity of Christian Doctrine 1
Beta Kappa Kappa 4
Spanish Club 2, 3, 4
New England Club 1, 2, 3, 4; President 4



BC

Grecian beauty . . . live and
let live . . . connoisseur of
good food . . . Anne . . .
lover of the arts . . . Christ-
mas sun tans . . . vogue . . .
Bostonian.





Julianne Podesta, A.B.

Terryville, Long Island, New York
Notre Dame Academy
Staten Island, New York

MAJOR: Art

MINORS: Education, English

ACTIVITIES:

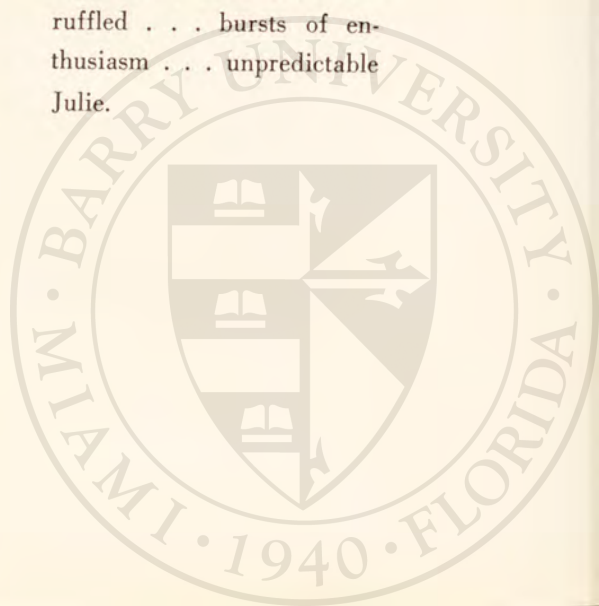
Athletic Association 4
House Council 2
Playhouse 4



Mission Council 1, 2, 3, 4; Publicity Chairman 3, 4
Cosmos 1



Julie . . . skillful hands . . .
clever satirist . . . child psych-
ologist . . . portrait in
sepia . . . calm . . . un-
ruffled . . . bursts of en-
thusiasm . . . unpredictable
Julie.





Ruth Pugh, A.B.

Clinton, Connecticut
Morgan High School

Transferred from the University of Connecticut, Storrs, Connecticut in Sophomore Year

MAJOR: English
MINORS: Journalism, Philosophy

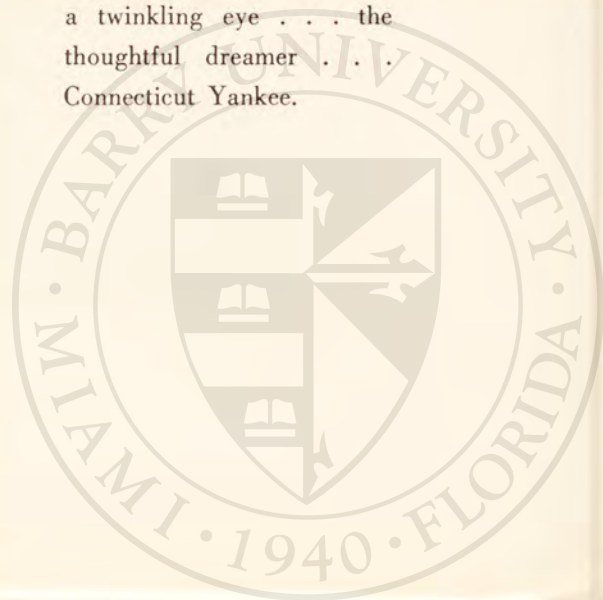
ACTIVITIES:

Student Council 3
Class Representative 3
Angelicus 3

Tara Singers 3
New England Club 4



Ruth . . . the roving reporter
. . . gentle mannered . . .
literary knack . . . crusading
spirit . . . a husky laugh and
a twinkling eye . . . the
thoughtful dreamer . . .
Connecticut Yankee.





Joan Rambour, A.B.

Columbus, Nebraska
Kramer High School

Attended the University of Nebraska in
Sophomore and Junior Years.

MAJOR: History

MINORS: Spanish, Education

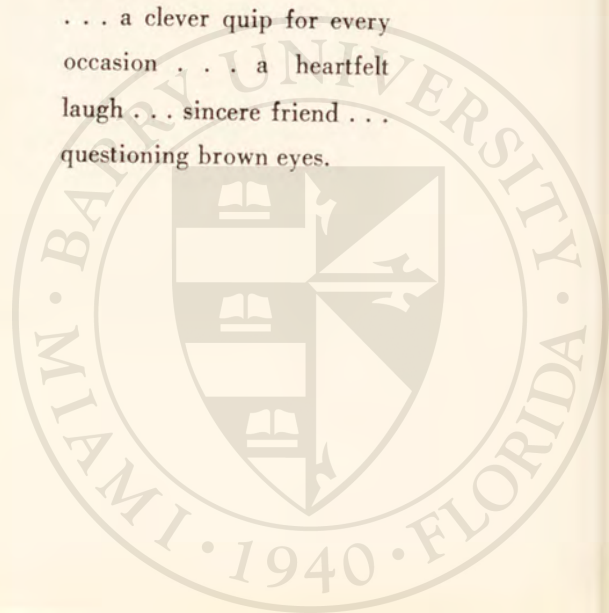
ACTIVITIES:

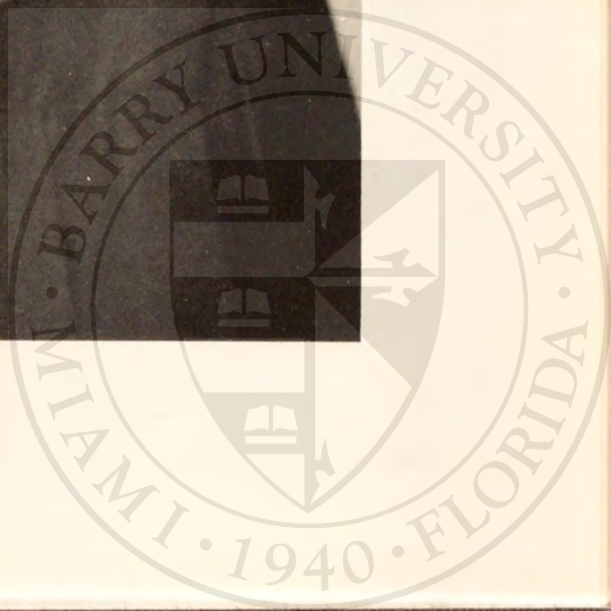
House Council 1

Impow 4



Joan . . . bridge fiend . . .
"Time for coffee" . . . Dart-
mouth's staunch defender
. . . a clever quip for every
occasion . . . a heartfelt
laugh . . . sincere friend . . .
questioning brown eyes.





Sonja Tarsey Simberg, A.B.

Miami Beach, Florida
Victoria Louise Gymnasium
Berlin, Germany

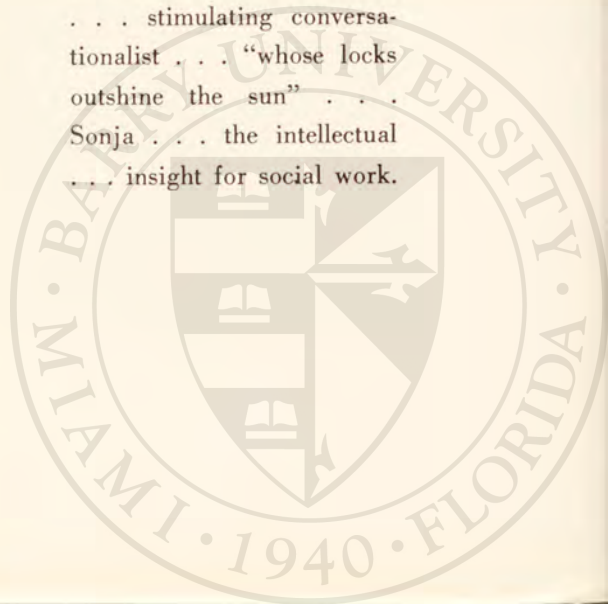
MAJOR: Sociology
MINORS: English, Philosophy, Psychology

ACTIVITIES:

Lambda Sigma, Campus Honor Society 1,
2, 3, 4
Who's Who Among Students in American
Universities and Colleges 4
Sociology Club 3, 4; President 4



The mother and student . .
overwhelming capacity for
the seemingly impossible
. . . charming, entertaining
. . . stimulating conversa-
tionalist . . . "whose locks
outshine the sun" . . .
Sonja . . . the intellectual
. . . insight for social work.





Amelia Tourino, B.S.

Colon, Republic of Panama
Academy of the Assumption
Wellesley Hills, Massachusetts

MAJOR: Biology
MINORS: Chemistry, French

ACTIVITIES:

Sodality 1, 2, 3, 4

Mission Council 1, 2, 3, 4; Secretary 4

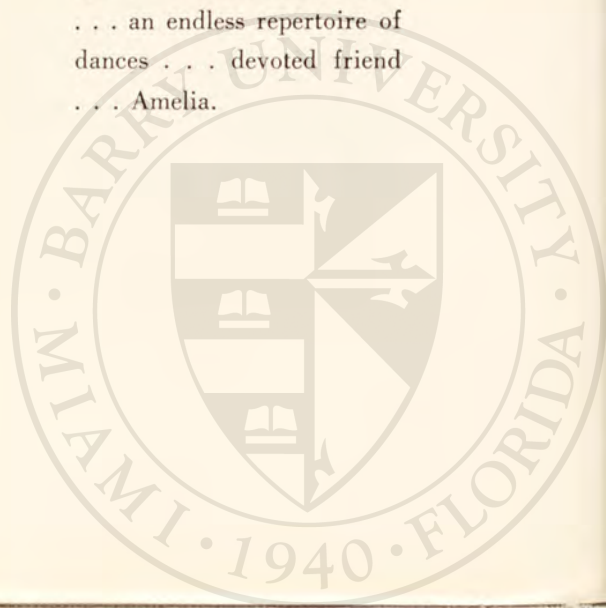
Science Club 1, 2, 3, 4

Spanish Club 1, 2, 3; Treasurer 3

Foreign Students Club 2, 3, 4; Secretary-
Treasurer 4



Neat and petite . . . Amelia
. . . quiet, reserved, yet a
mischievous twinkle in her
eye . . . methodical mind
. . . an endless repertoire of
dances . . . devoted friend
. . . Amelia.





Georgann Travnikar, A.B.

Cleveland, Ohio
 Rosarian Academy
 West Palm Beach, Florida

MAJOR: Spanish
 MINORS: English, French, History

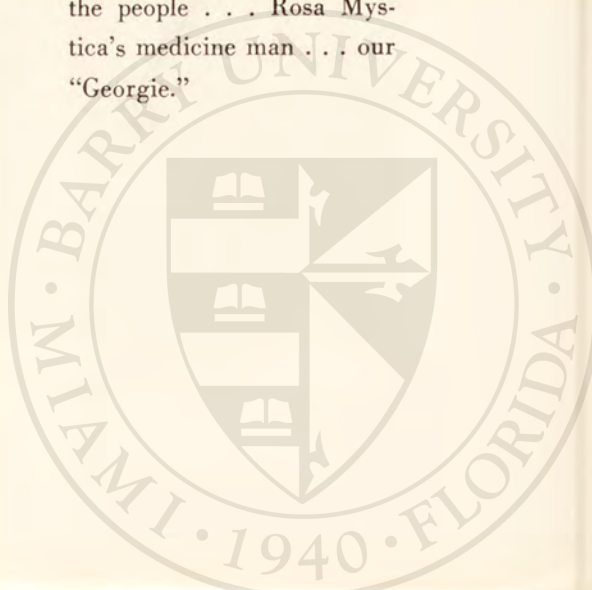
ACTIVITIES:

Sodality 1, 2, 3, 4
 Student Council 1, 3, 4; Student Body President 4
 Lambda Sigma, Campus Honor Society 1, 2, 3, 4
 Who's Who Among Students in American Universities and Colleges 4
 Class Secretary 2
 Class President 3

Athletic Association 1, 2
 Playhouse 1
 Tara Singers 2
 Mission Council 1, 2, 3, 4
 Beta Kappa Kappa 4
 Spanish Club 1, 2, 3, 4
 Impow 1, 2, 3, 4



"Really?" . . . determined efficiency . . . golden heart and giving hand . . . vivacious . . . diplomatic voice of the people . . . Rosa Mystica's medicine man . . . our "Georgie."





Suzanne Marie Winterer, B.S.

Fort Lauderdale, Florida
Nerinx Hall

Webster Groves, Missouri

Transferred from Webster College, Webster
Groves, Missouri in Junior Year

MAJOR: Education

MINORS: English, Spanish, Religion

ACTIVITIES:

Sodalitiy 3, 4

Athletic Association 3, 4

Angelicus 4

Torch and Shield 4

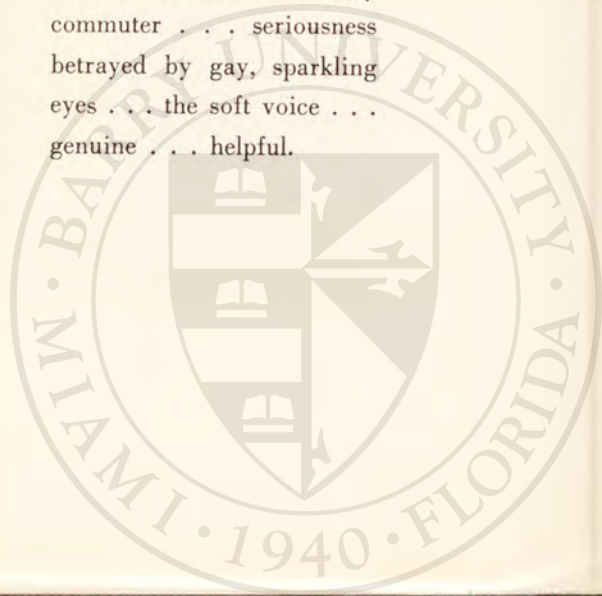
Choric Cameos 3

Press Club 4

Florida Club 3, 4



"Sue" . . . sweet, endearing
smile . . . an alert mind, a
sense of values . . . daily
commuter . . . seriousness
betrayed by gay, sparkling
eyes . . . the soft voice . . .
genuine . . . helpful.





Catherine Marie Wodtke, B.S.

Vero Beach, Florida
Vero Beach High School

MAJOR: Mathematics

MINORS: Secretarial Science, English, History

ACTIVITIES:

Sodality 1, 2, 3, 4; Secretary 2; Catholic Truth Committee Chairman 3; Vice Prefect 4

Student Council 4; Secretary 4

Lambda Sigma 3

Who's Who Among Students in American Universities and Colleges 4

Class Secretary 3

Class Treasurer 4

Athletic Association 1, 2, 3, 4; Vice President 4

Tertiaries 4

Angelicus 2

Torch and Shield 3, 4; Business Manager 3;

Photography Editor 4

Cor Jesu Choir 2, 3, 4

Tara Singers 4

Playhouse 4

Mission Council 1, 2, 3, 4; Treasurer 3

Home Economics Club 4

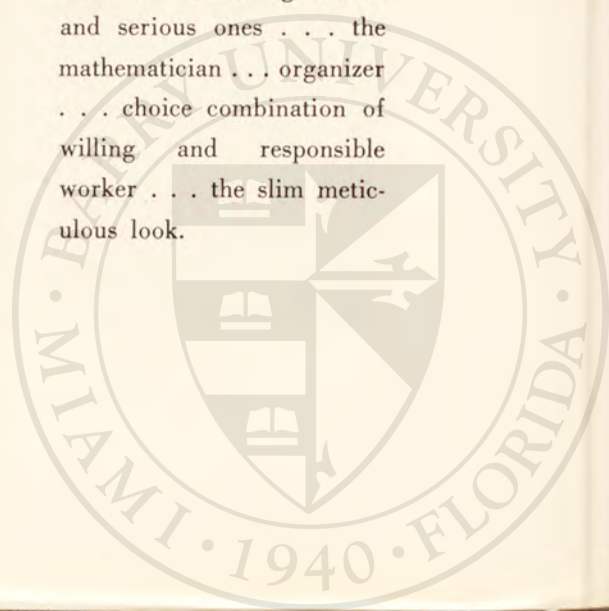
Spanish Club 1

Florida Club 1, 2, 3, 4



BC

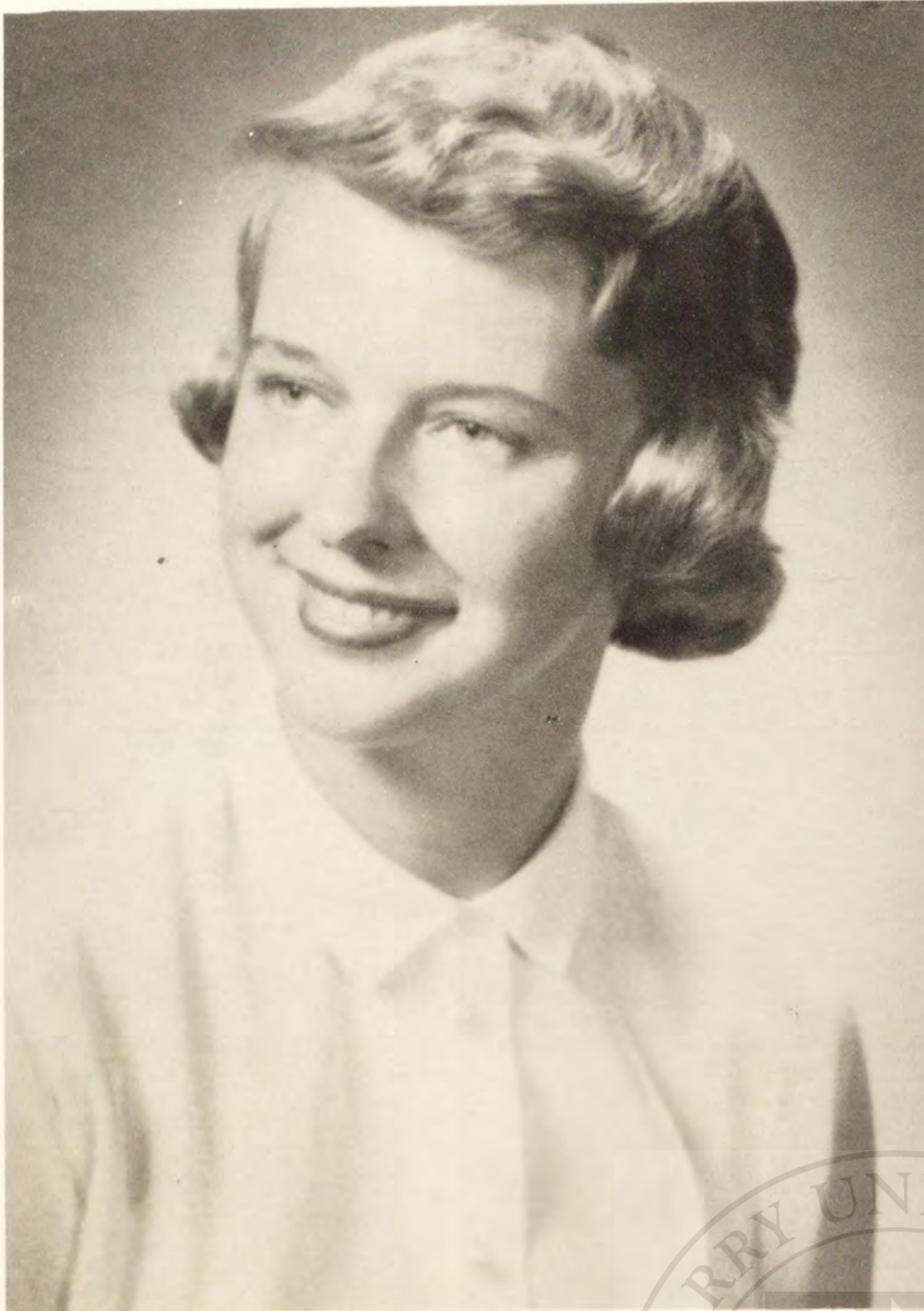
Kay . . . capable leader and ready follower . . . perfect blend of fun-loving moods and serious ones . . . the mathematician . . . organizer . . . choice combination of willing and responsible worker . . . the slim meticulous look.





Margaret Martha Deyman, A. B.

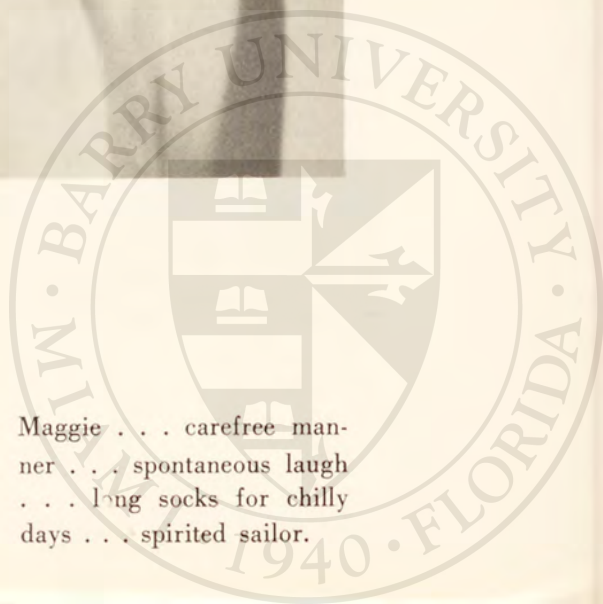
North Muskegon, Michigan



MAJOR: Sociology
MINORS: English, Philosophy

ACTIVITIES:

Sociology Club 3, 4
Impow 3, 4; Vice President 3



Maggie . . . carefree man-
ner . . . spontaneous laugh
. . . long socks for chilly
days . . . spirited sailor.

Marta Gongalez , A.B.

Santa Clara, Los Villas, Cuba

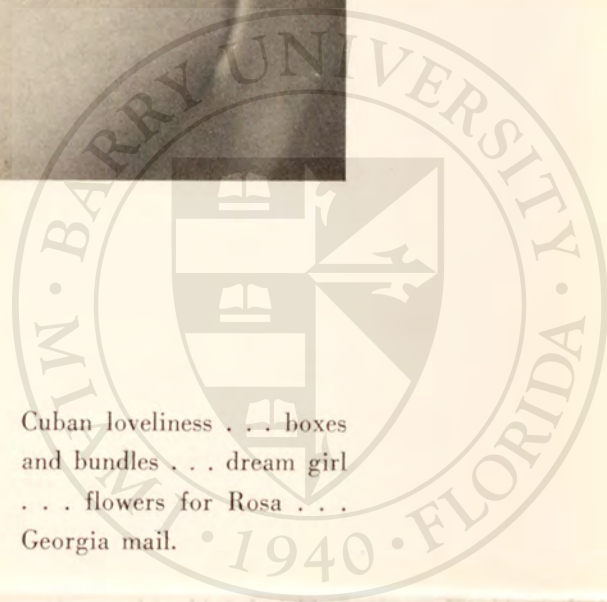


MAJOR: Sociology
MINORS: Secretarial Science, English, Philosophy

ACTIVITIES:

Lamba Sigma, Campus Honor Society 2, 3
Athletic Association 1, 2
Torch and Shield 3
Mission Council 1, 2, 3, 4; President 4
Sociology Club 3, 4
Spanish Club 1, 2, 4
Foreign Students Club 2, 3, 4

Cuban loveliness . . . boxes
and bundles . . . dream girl
. . . flowers for Rosa . . .
Georgia mail.



Joyce Bottomley Spaulding, A.B.

Burlington, Wisconsin



MAJOR: Education
MINORS: Mathematics, English, Spanish

Music lover . . . Aunt Jo . . .
potato chips . . . "How about
that?" . . . socks and saddles.





The Very Reverend Richard T. Murphy, O.P., looks on as officers of the Class of 1954 plant their roots firmly in Barry's soil, January 18, 1951.

Seniors Reminisce

The queen reigns supreme over the Coronation Ball.



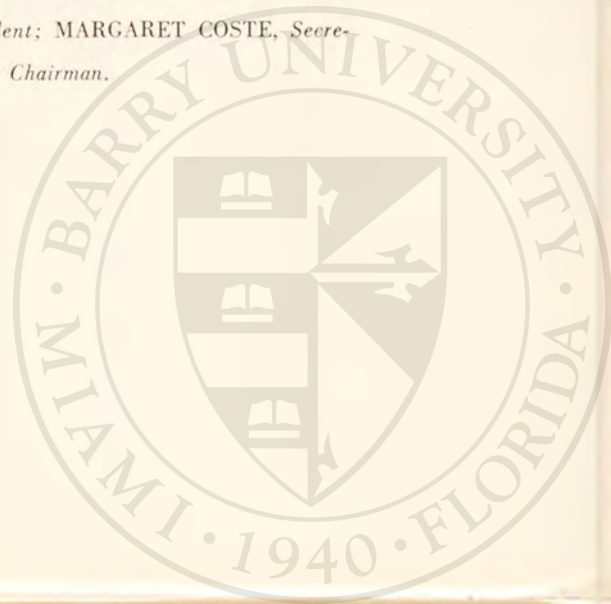
Our class receives its charter for the final time, October 12, 1953.



Junior Class Officers



MARGARET MORAN, *President*; MARY KURZ, *Vice President*; MARGARET COSTE, *Secretary*; JULIA BOWEN, *Treasurer*; WINIFRED KINE, *Social Chairman*.





Angelita Acosta



Marguerite Barnes



Julia Bowen



Noemi Campos



Caroline Childs



Margaret Coste



Suzanne Curry



Sally Gozo



Mary Harant



Patricia Henle



Eva Hoenig



Janet Howard



Celestine Igel



Winifred Kine



Florence Krupp



Margarita Kumata





Mary Kurz



Maria McKittrick



Carmen Martinez



Margaret Moran



Joan O'Brien



Francisca Olba



Olga Parks



Joanne Rerucha





Ernestine Ricou



Raquel Rivera



Hilda Roguly



Mercedes Soto



Pauline Stafford



Patricia Touscany

Not pictured:
Ruth Cannon
Mary Eisinger
Sylvia Florer

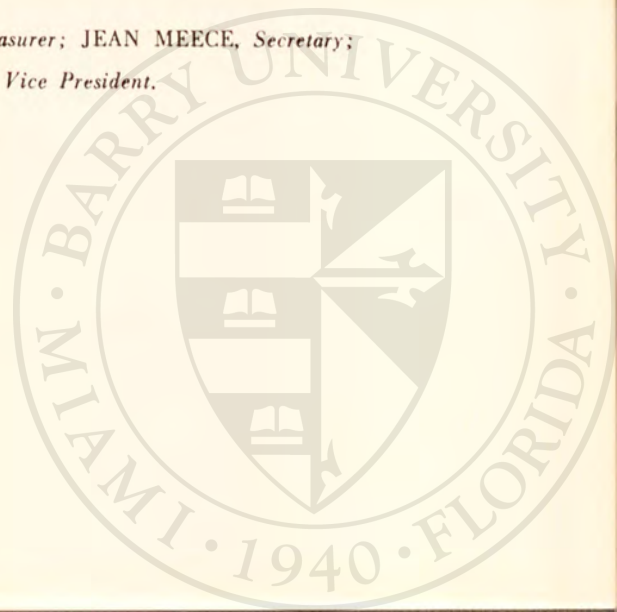
Olga Pignatore
Barbara Schmid
Jovita Sierra



Sophomore Class Officers



LOUISE DORN, *Social Chairman*; RUTH MAHONEY, *Treasurer*; JEAN MEECE, *Secretary*;
PENELOPE ESTABROOK, *President*; CECILE ROUSSELL, *Vice President*.





Mary Adlington
Germaine Bicknell



Myra Botner
Rosemary Brennan

Jacquelyn Brisbin
Michaleen Buckentin



Barbara Burke
Carmen Camejo



Bessie Cureton
Carole Cuttrelle



Shirley Davis
Mary Dinnen



Louise Dorn
Virginia Dropp



Penelope Estabrook
Margaretta Floyd





Elizabeth Frost
Lucia Gomez

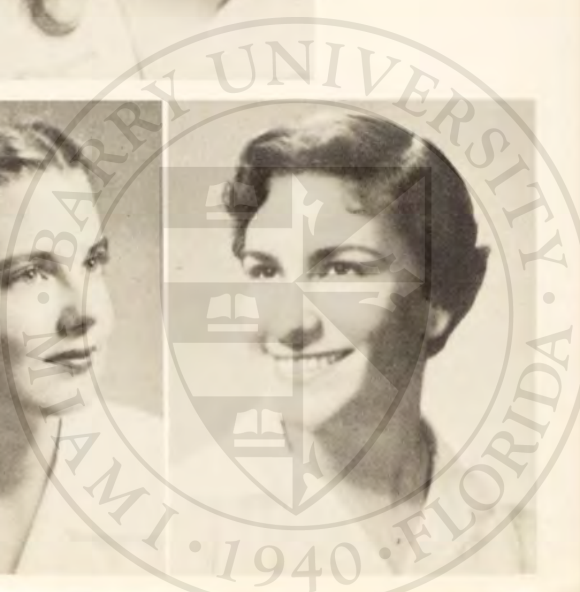


Mary Ann Guzman
Dorothy Haggerty

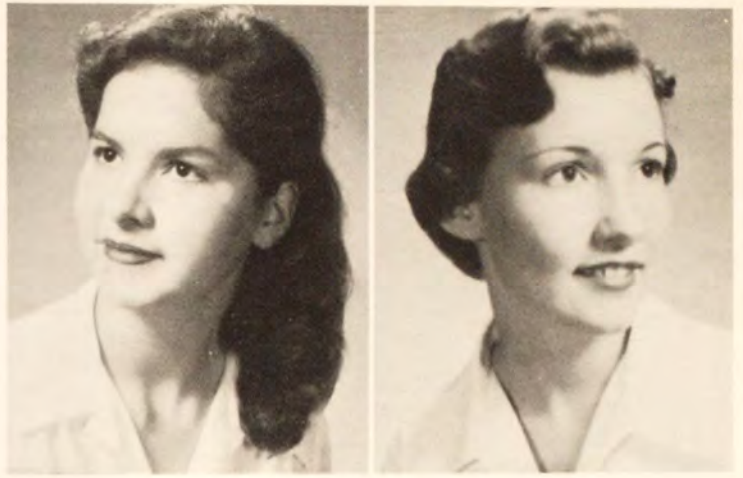
Charlene Jurgensen
Barbara Keller



Marie Kersting
Maria Lluberias



Joanne Long
Donna Lynskey



Mary Mack
Ruth Mahoney



Nora Malone
Grace Merino



Jean Meece
Barbara Momm





Clarice Moyle
Patricia O'Connor

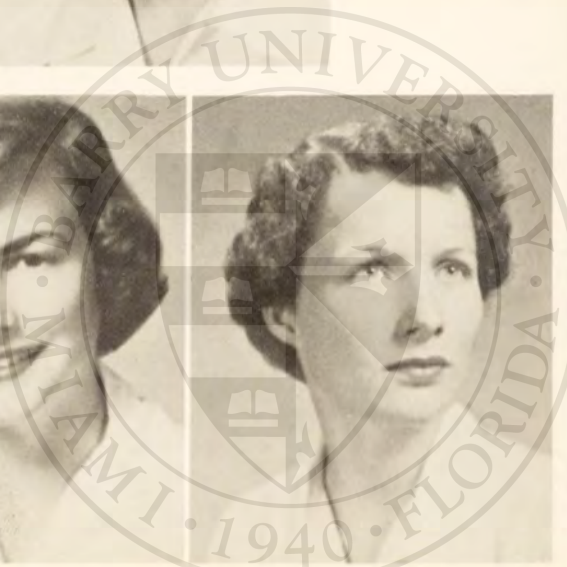


Parise Ouellette
Noreen O'Sullivan

Irene Patterson
Myriam Pelaez



Joanne Renuart
Cecile Roussell



Patricia Reilly
Marilyn Schlise



Carol Schmitt
Joyce Sheehan



Joanne Sicking
Joyce Snowden



Carmen Suarez
Joan Weiller

Not pictured:
Nidia Bunting
Elaine Franks
Janet Gill
Mary Lou Hodges
Dolores Martinez
Milagros Morales
Patricia Rowan
Elizabeth Sellars



Freshman Class Officers



ROSA VALENCIA, *Secretary*; GABRIELLA PADELTA, *Social Chairman*; MARY ROSE RIORDAN, *Vice President*; MARY LOU HARDING, *President*; MARY PALDA, *Treasurer*.





Patricia Ace
 Mary Louise Adiutori
 Dorothy Adlington



Rose Alsina
 Ruth Anning
 Rosanne Arena



Maria Arguelles
 Sylvia Arnoldson
 Diane Barber

Denese Barone
 Constance Bennett
 Jane Birkbeck



Elizabeth Bodenhamer
 Ann Bolerasky
 Judith Ann Britt



Catherine Bruder
 Mary Regina Buzolits
 Margaret Carney



Mary Kathryn Cliatt
Mary Margaret Cline
Constance Coburn



Edith Cockcroft
Elsie Currier
Joan Czarnecki



Ann Davis
Barbara De Cillis
Deborah Delaney



Georgana Doyle
Lucia Echeverri
Madalee Elkins



Rosemary Fitzburgh
Rita Fox
Dorothea Fraher



Esther Friedheim
Patricia Gosselin
Elizabeth Gowland





Mary Wilma Graham
 Kathleen Hackett
 Terry Haley



Maritza Hollandy
 Mary Lou Harding
 Janet Hart



Norene Hartmann
 Lois Hays
 Georgeann Heitzer

Teresa Hendricks
 Mary Herold
 Rita Hubertz



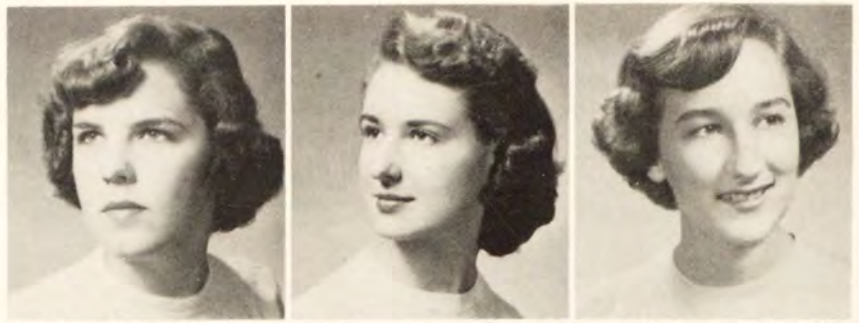
Barbara Igel
 Joan Inglesby
 Barbara Keck



Virginia Keeler
 Elizabeth Keeley
 Sheila Kelly



Kathleen Kimbel
Joan Kitko
Carol Kratz



Dolores Lange
Joanne Latendresse
Marilyn Lathers



Bruniselda Lavergne
Marcia Leiseca
Letitia Ludwig



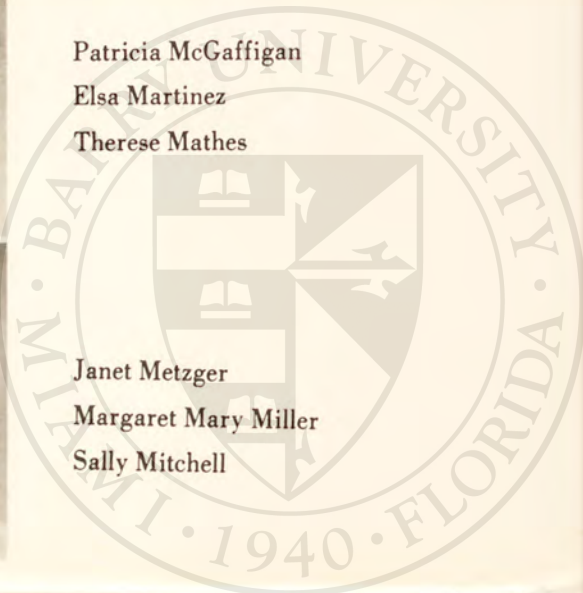
Joan McCants
Agnes McCarron
Barbara McCarter



Patricia McGaffigan
Elsa Martinez
Therese Mathes



Janet Metzger
Margaret Mary Miller
Sally Mitchell





Virginia Morrison
 Jeanne Mullen
 Frances Myers



Catherine Mykytka
 Else Niebuhr
 Mary Anne Nott



Marilyn O'Neil
 Gabriella Padelt
 Mary Palda

Carol Parachek
 Charlene Parramore
 Carmen Pino



Mary Ellen Price
 Lourdes Prieto
 Zoe Prio



Lorraine Purnell
 Peggy Ann Ralph
 Ligia Rappaccioli



Sally Reeves
Mary Rose Riordan
Thelma Rossman



Anne Scannell
Meta Schmitz
Elizabeth Schuster



Maria Scott
Molly Serrao
Marianne Stadler
Diane Surprenant



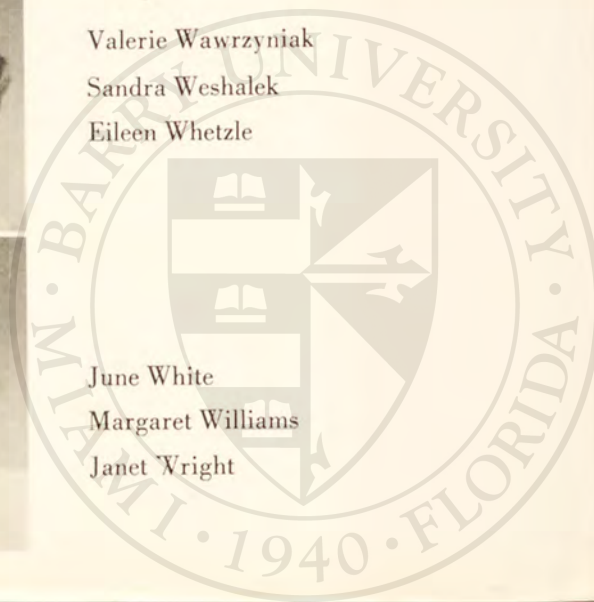
Mary Ellen Tischler
Jennette Trickey
Rosa Valencia



Valerie Wawrzyniak
Sandra Weshalek
Eileen Whetzle

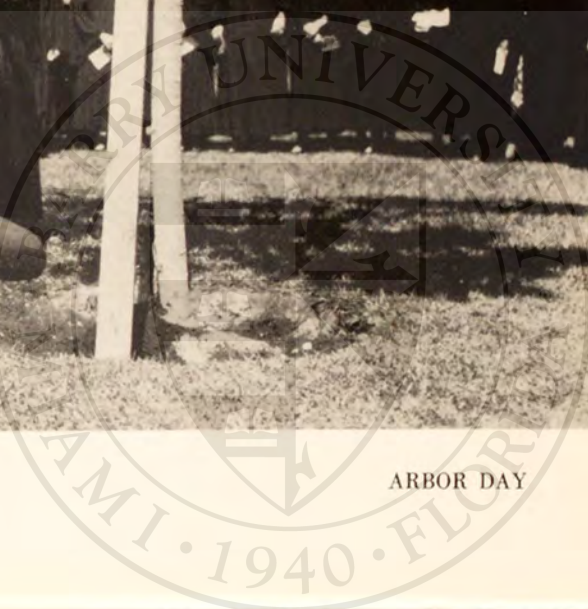


June White
Margaret Williams
Janet Wright



Days to Remember . . .

FORMAL INVESTITURE



ARBOR DAY

Spiritual Activities

The Barry College Sodality, devoted "To Jesus Through Mary," has as its aim the cultivation of a deep and personal love of the Blessed Mother, the sanctification of self and others, and the defense of the Church.

Pope Pius XII's declaration of the Marian Year served to intensify sodality activities during the 1953-54 school term. The Marian Year began on the Feast of the Immaculate Conception and since Barry's Sodality is dedicated to the Blessed Mother under that title, its members were particularly inspired by this proclamation.

Traditional campus Sodality projects include nightly recitation of the family rosary, the living rosary in October, reception of new sodalists on December 8, triduum for our Holy Father at Christmas, annual spiritual retreat for the student body, "Blue Valentine" formal dance, Vocation Week lectures, World Sodality Day, and Marian Day at Barry.

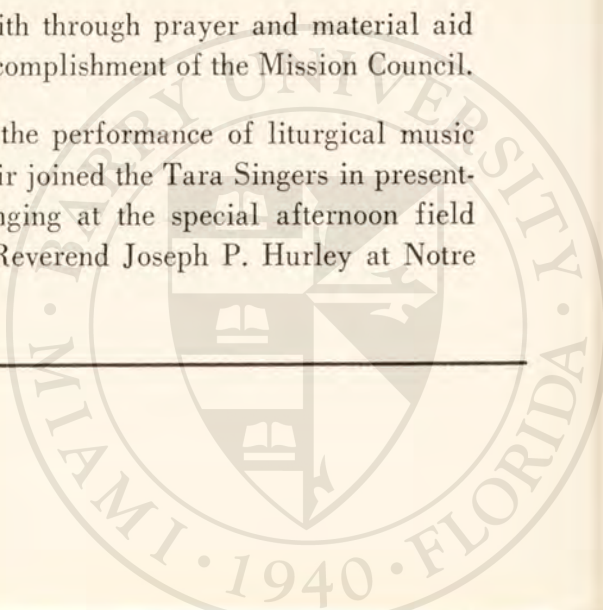
This year Barry students made a Marian Year pilgrimage to the Shrine of Our Lady of La Leche in Saint Augustine, March 6-7.

The "Christopher" ideal is exemplified among Barry students not only in the Sodality but through participation in certain other campus organizations which also aim at practical Catholicity. These organizations include the Confraternity of Christian Doctrine, the Mission Council, and Cor Jesu Choir.

The Confraternity of Christian Doctrine has as its objective the religious instruction of children unable to attend Catholic schools.

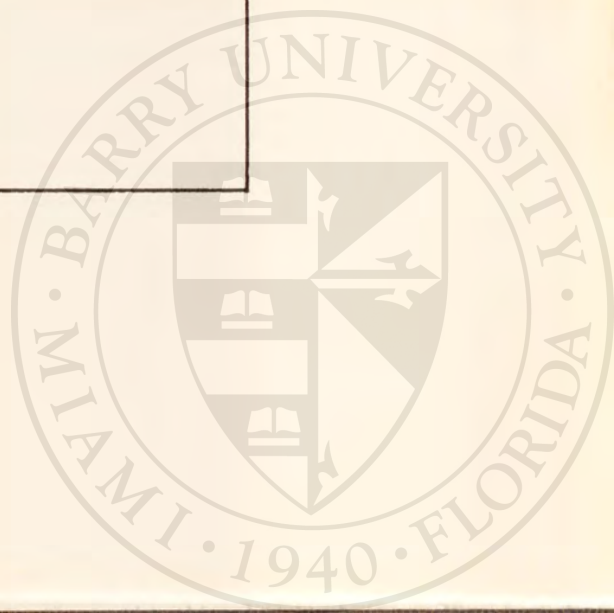
"The propagation of the Catholic faith through prayer and material aid to the needy" is both the aim and the accomplishment of the Mission Council.

Cor Jesu Choir was established for the performance of liturgical music at chapel ceremonies. This year the choir joined the Tara Singers in presenting the Christmas Oratorio and in singing at the special afternoon field Mass offered by His Grace, the Most Reverend Joseph P. Hurley at Notre Dame Academy, February 14.





Gate of Heaven





Our May Crowning



EXECUTIVE BOARD



Sodality officers encourage by their example the observance of the traditional campus motto: "A rosary a day is the Barry way." Pictured near Bary's shrine in Stella Matutina, where the Family Rosary is recited each evening are Penelope Estabrook, Secretary; Catherine Wodtke, Vice Prefect; Mary Emma Grady, Prefect; and Clarice Moyle, Treasurer.

MAKING ROSARIES

A special Sodality project this year was the making of gift rosaries. Here Penelope Estabrook, one of the organizers of this activity, instructs craftsmen in the art of rosary making. Left to right: Elizabeth Gowland, Penelope, Ruth Mahoney, and Clarice Moyle.





SODALITY COUNCIL

Officers, committee chairman, and secretaries form the SODALITY COUNCIL which lays the groupwork for plans and projects. Members include: M. Kersting, M. Barnes, C. Moyle, M. Grady, P. Estabrook, C. Wodtke, E. Franks, S. Hodge. Not pictured: M. Riordan and L. McClellan. Moderator of the Sodality: Sister Mary Paul, O.P.

RECEPTION

"Oh Mary, we choose thee this day to be our Queen, our Advocate, and our Mother." New sodalists receive their medals on December 8, RECEPTION DAY. In the background are S. Hodge and M. Grady, instructors of the newly received candidates: M. Riordan, P. Ace, E. Friedheim, M. Lathers, M. Schlise, M. Harding, C. Parachek, J. Latendresse, M. Williams, G. Doyle, T. Hendricks. Not pictured: R. Arena, K. Kimbel, K. Bruder, J. Czarnecki, B. Keck, C. Mykytka.



OUR LADY'S COMMITTEE

Near Our Lady's grotto is pictured OUR LADY'S COMMITTEE, whose members strive to know, love, and honor Mary and, by good example spread devotion to her and her Divine Son. Members include, sitting: D. Martinez, M. Lathers, J. White, G. Doyle, L. Ludwig, P. Williams, A. McCarron, J. Bodenhamer, E. Friedheim. Standing: C. Camejo, G. Travnikar, M. Tischer, D. Haggerty, M. Harding, M. Stadler, E. Ricou, E. Sellars, J. Howard, H. Roguly, M. Dinnen, E. Cockeroft, K. Kimbel, J. Kitko, M. Hanzo, M. Kurz, J. Sierra. Moderator: Sister Jean Marie, O.P. Not pictured: L. McClellan, Chairman; and M. Barnes, Secretary.



CATHOLIC TRUTH COMMITTEE

The CATHOLIC TRUTH COMMITTEE seeks to propagate truth by introducing Catholic literature into secular schools and libraries. The members are shown grouped around the chapel pamphlet rack. Members include, standing: D. Supernant, C. Kratz, M. Riordan, Chairman; J. McCants, M. Schlise, E. Franks, Secretary; J. Renuart, B. Keck, J. Mullen, Kneeling: J. Weiller and T. Hendricks. Moderator: Sister Michael James, O.P. Not pictured: D. Barber, J. Czarnecki, M. Herold, S. Kelly, D. Lange, C. Mykytka, B. McCarter, J. O'Hara, G. Padelt, J. Snowden, J. Wright, P. Ralph, B. Radford, S. Gozo.



EUCCHARISTIC COMMITTEE

Kneeling before the altar in Cor Jesu Chapel is the EUCCHARISTIC COMMITTEE, dedicated to fostering devotion to Christ in the Eucharist. Members include: I. Dempsey, P. Mies, M. Kersting, Secretary; S. Hodge, Chairman; P. Reilly, E. Frost, E. Gowland, R. Brennan, J. McGowan, P. Ace, P. Ouellette, R. Mahoney, J. Rerucha, M. Miller, C. Roussell, M. Serrao, J. Latendresse, Moderator: Sister Marie Loretta, O.P. Not pictured: R. Geyer, M. Goodman, K. Hackett, W. Henneby, M. Hurley, J. Inglesby, M. Lluberis, T. Mathes, J. Meece, M. Nott, F. Olba, J. Wells.





CONFRATERNITY
OF
CHRISTIAN
DOCTRINE

Members of the CONFRATERNITY OF CHRISTIAN DOCTRINE are: M. Lluberas, M. Tischer, E. Gowland, M. Lathers, J. Czarnecki, C. Moyle. Moderator: Sister M. Williamine, O.P. Not pictured: L. Ludwig and M. Schmitz.

Members of the MISSION COUNCIL are: A. Tourino, Secretary; J. Gennett, M. Gonzalez, President; E. Lopez, N. Campos, L. Ludwig, A. Morley, Vice President; G. Travnikar, M. Keith, F. Olba, Treasurer; S. Hodge, M. Grady, D. Delaney, M. Dinnen, C. Wodtke, C. Moyle, J. Weiller. Moderator: Sister M. Jeannine, O.P. Not pictured: R. Arena, J. McGowan, G. Padelt, J. Podesta, C. Suarez.

MISSION
COUNCIL



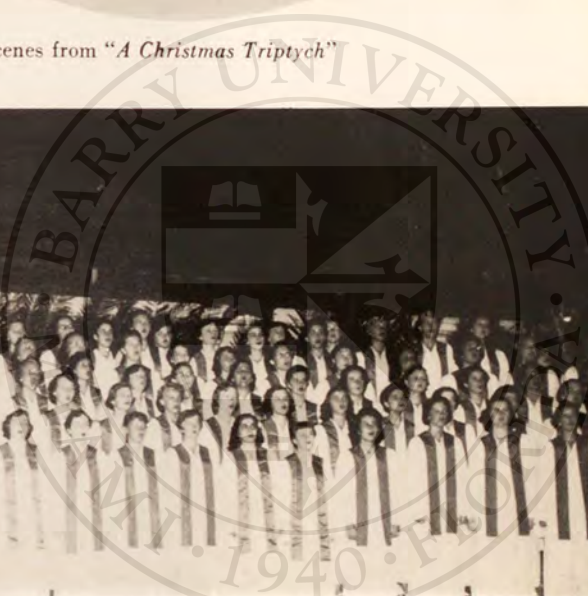


High Masses and other liturgical functions are rendered more impressive by the singing of the COR JESU CHOIR. Members are: E. Ricou, R. Fox, M. Lathers, E. Sellars, J. McGowan, J. McCants, M. Serrao, E. Gowland, C. Kratz, K. Kimbel, J. Rerucha, L. Rappacioli, R. Mahoney, C. Parramore, C. Wodtke, M. Grady, P. Mies, S. Hodge, C. Pino, D. Martinez, M. Arguelles, M. Palda. Director: Sister Thomas Gertude, O.P.

COR JESU CHOIR



Scenes from "A Christmas Triptych"





The student body marches in the solemn procession of the Blessed Sacrament during Forty Hours Devotion.

Father Monroe distributes blessed roses to the students on October 4, Rosary Sunday.



Monsignor Barry celebrates High Mass in Cor Jesu Chapel.

Cecile Roussel, Parise Ouellette, Clarice Moyle, and Ruth Mahoney pause before entering chapel on Rosary Sunday.



FRESHMAN INVESTITURE

Procession into Cor
Jesu Chapel.



Benediction of the
Blessed Sacrament af-
ter Investiture.



Students assisting in
chapel and sacristy
work.



Scholastic Activities

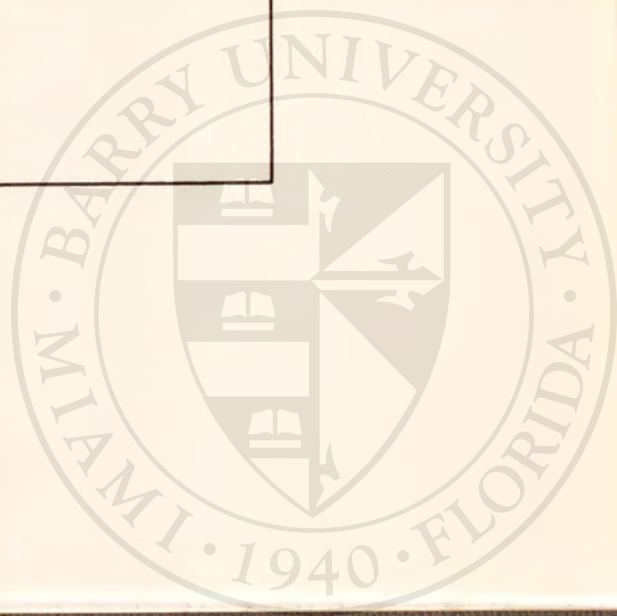
The Barry girl finds, in addition to formal classroom instruction, the opportunity of more fully developing her capabilities by membership in various honor societies and in scholarly organizations within her chosen field of study.

A perfect balance of intellectual powers and spiritual and social development is characteristic of these organizations. Leadership is stimulated, a spirit of cooperation is dominant and in each student a realization of her dignity as a woman is developed. "That highest dignity is open to you if you will accept the higher duty . . . Queens you must always be; queens to your lovers; queens to your husbands and sons; queens of higher mystery to the world beyond, which bows itself and will forever bow before the myrtle crown and the stainless sceptre of womanhood . . ."





Mother of Good Counsel



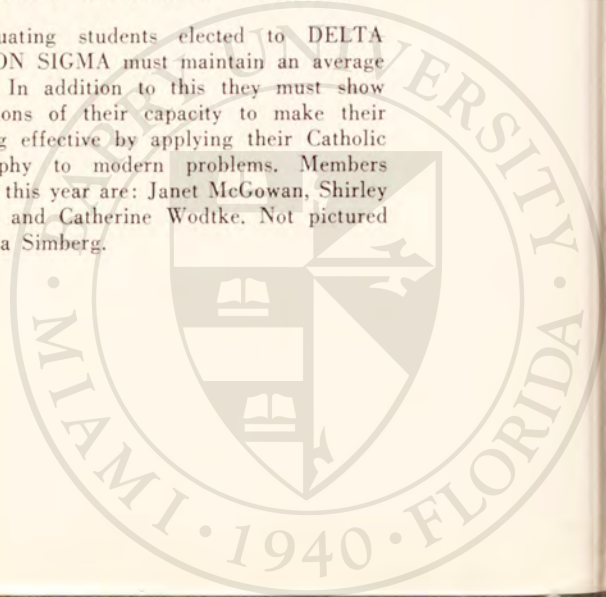
KAPPA GAMMA PI

KAPPA GAMMA PI NATIONAL HONOR SOCIETY requires of its members an over-all 2.3 average, and each member must also show outstanding leadership in extracurricular activities. From the class of 1954, Barry has elected Georgann Travnikar, Mary Emma Grady, and Isabel Dempsey.



DELTA EPSILON SIGMA

Graduating students elected to DELTA EPSILON SIGMA must maintain an average of 2.0. In addition to this they must show indications of their capacity to make their learning effective by applying their Catholic philosophy to modern problems. Members elected this year are: Janet McGowan, Shirley Hodge, and Catherine Wodtke. Not pictured is Sonja Simberg.





WHO'S WHO AMONG STUDENTS IN AMERICAN UNIVERSITIES AND COLLEGES

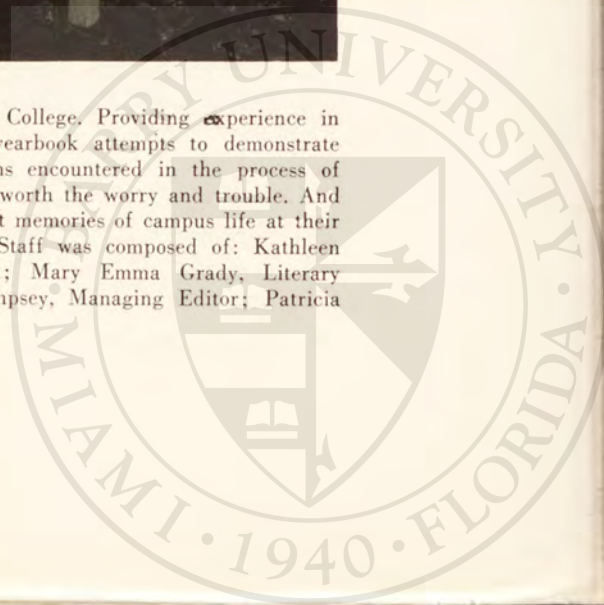
Each year several seniors are included in WHO'S WHO. This distinction is based on scholastic accomplishment, extracurricular activity, and service to the college. Seniors nominated to this honor are: Catherine Wodtke, Janet McGowan, Shirley Hodge, Mary Emma Grady, Isabel Dempsey, Sonja Simberg, and Georgann Travnikar.

Leadership and scholarship are required of members of the campus honor society, LAMBDA SIGMA, which strives to interest younger students in qualifications for the national honor societies. Members of the society are: W. Kine, M. Gonzalez, S. Hodge, I. Dempsey, M. Grady, J. McGowan, M. Eisinger, M. Coste, M. Kurz, G. Travnikar, E. Lopez, C. Roussell, P. Estabrook, C. Wodtke, C. Moyle, S. Davis. Pledges include: O. Parks, M. Riordan, E. Gowland, M. Harding, G. Padelt, and G. Doyle.





The TORCH and SHIELD is the student annual of Barry College. Providing experience in writing, business management, photography, and layout, the yearbook attempts to demonstrate pictorially the spirit of Barry College. Many are the problems encountered in the process of shaping the book, but the results prove to the staff that it was worth the worry and trouble. And for the student body, there will be a record of the many pleasant memories of campus life at their beautiful alma mater in the South, Barry College. The 1954 Staff was composed of: Kathleen Hackett, Literary Editor; Shirley Hodge, Literary Assistant; Mary Emma Grady, Literary Assistant; Catherine Wodtke, Photography Editor; Isabel Dempsey, Managing Editor; Patricia Huml, Advertising Manager. Moderator: Sister Mary Paul, O.P.



The ANGELICUS is the monthly newspaper published by members of the Press Club, and the journalism classes. It holds membership in the Florida Intercollegiate Press Association, the Associated Collegiate Press, and the Catholic School Press Association.

The Press Club draws its members from students interested in journalism; thus two organizations are coordinated. At the meetings, students hear guest speakers who are active in the newspaper or some other field of writing. Favorite topics are current journalistic problems and practices. The next issue of the ANGELICUS is also discussed and planned. A conducted tour of the Miami HERALD and a trip to the NEWS Institute at the University of Miami are two field trips made annually by the organization.



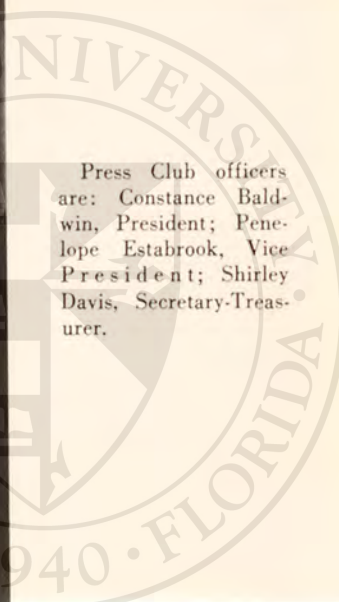
A reporter for the ANGELICUS may be distinguished two ways: (1) she carries a large notebook full of unanswered questions and unfinished stories, and (2) she is usually pallid, breathless and disheveled.

Despite the hurry-scurry of meeting deadlines, blurred pictures, lost copy (or lost reporters), the issue always appears on time and in readable conditions. Ask any staff member and she'll tell you "It's all worth it." That is, until the headaches of the next issue start!

ANGELICUS STAFF

- Editor CONSTANCE BALDWIN '54
- Staff Writers KATHLEEN HACKETT '57, RUTH PUGH '54
SALLY GOZO '56, REGINA BUZOLITS '57
- Music Editor PENELOPE ESTABROOK '56
- Photography SHIRLEY DAVIS '56
- Business SALLY GOZO '56, JOYCE SNOWDEN '56

Staff—D. Lange, J. Metzger, C. Pino, J. Meece, N. O'Sullivan, V. Dropp, V. Morrison, J. Hall, B. Kuzmick, P. O'Connor, S. Winterer, E. Franks, J. Trickey, and J. Podesta.



Press Club officers are: Constance Baldwin, President; Penelope Estabrook, Vice President; Shirley Davis, Secretary-Treasurer.



HOME ECONOMICS CLUB

The members of the HOME ECONOMICS CLUB are interested in both professional home-making and activities which stress the characteristics of a lovely Christian home. Members include: T. Haley, M. Lathers, Secretary-Treasurer; P. Ace, S. Weshalek, C. Wodkte, D. Lynskey, President; J. Weiller, A. Davis, J. Meece, Vice President; M. Grady, E. Martinez, F. Krupp, E. Friedheim, J. Kitko, M. Carney, Moderator; Sister M. Eulalia, O.P. Not pictured: J. Birkbeck, I. Dempsey, V. Dropp, B. Momm, J. Rerucha.

The ALBERTUS MAGNUS SCIENCE CLUB aims to develop interest in science and research through correlated field trips, films, and exhibitions. Members include: E. Gowland, M. Coste, Treasurer; M. Miller, E. Radford, M. Tischer, M. Riordan, F. Myers, C. Mykytka, V. Wawrzy-niak, P. Ralph, J. Hart, M. Kurz, M. Hanzo, Vice President; B. Bostick, President; W. Kine, L. Gomez, Secretary; J. Sheehan, Moderator; Sister Mary Jane, O.P.

ALBERTUS MAGNUS SCIENCE CLUB



BETA
KAPPA
KAPPA



BETA KAPPA KAPPA was founded for the purpose of fostering and of transmitting to the modern world an interest in classical civilization to which it is indebted for its government, laws, literature, languages and arts. Members include: P. Huml, Vice President; V. Morrison, C. Cuttrelle, A. Morley, C. Kratz, L. Dorn, S. Davis, E. Franks, M. Williams, C. Martinez, N. O'Sullivan, L. Purnell, N. Campos, E. Lopez, J. Gennett, H. Roguly, Moderator: Sister M. Petronilla, O.P. Not pictured: L. McClellan, President; C. Camejo, Secretary; P. Estabrook, G. Travnikar, J. Snowden.

THE SOCIOLOGY CLUB, the newest club on the campus, endeavors to bring to its members a broadened knowledge of, and interest in, the various phases of social work. The club attempts to achieve its purpose by means of field trips to social service agencies, and talks by specialists in the work. Members include: V. Wawrzyniak, M. Riordan, D. Lange, E. Ricou, S. Simberg, President; T. Hendricks, G. Doyle, J. Hall, V. Morrison, M. Harding, M. Schmitz, P. Ouellette, G. Bicknell, S. Hodge, M. Gonzalez, E. Radford, C. Coburn, M. Deyman, P. Stafford, M. Stadler, Moderator: Sister M. Elaine, O.P. Not pictured: J. Long, W. Hennebry, P. Mies.



"Let There Be Music"

TARA SINGERS



The TARA SINGERS carry on the tradition of the Irish minstrels in adding color to many musical occasions. Members include: R. Rivera, S. Hodge, C. Wodtke, R. Mahoney, P. Mies, M. Grady, M. Palda, J. Bodenhamer, E. Gowland, J. White, N. Chamberlain, D. Haggerty, J. Renuart, M. Cliatt, E. Cockcroft, C. Cuttrelle, C. Roussel, S. Mitchell, J. McGowan, M. Lathers, P. Estabrook, M. Hanzo, D. Martinez, S. Reeves, M. Serrao, J. Birkbeck, E. Sellars, P. Boylon, M. Botner, S. Davis, J. Britt, C. Moyle, P. Reilly, P. Doherty, J. Colletti, C. Camejo. Director: Sister Maura, O.P.

DAY STUDENT GLEE CLUB



The DAY STUDENT GLEE CLUB was organized at Christmas time to provide choral entertainment for various Christmas functions. Members include: J. Spalding, O. Parks, M. Hanzo, S. Weshalek, M. Botner, A. McCarron, M. McKittrick, M. Elkins, C. Coburn, M. Mack, J. Renuart, S. Mitchell, D. Martinez, T. Hendricks, S. Curry, B. De Cillis, G. Doyle, S. Davis, C. Marshall, E. Sellars, M. Barnes, K. Cliatt, D. Lynskey, M. Hollandy, M. Buzolits, B. Keck, B. Bostick, C. Cuttrelle, J. Howard. Organist: P. Estabrook. Moderator: Sister Maura, O.P.



Pictured around the statue of St. Cecilia are the members of the CECILIAN CLUB who endeavor to develop within themselves a deep love of music and an appreciation of its types, composers, and performers. Members include: S. Curry, O. Parks, S. Davis, Secretary; P. Estabrook, President; R. Mahoney, Treasurer; M. Palda, L. Omler, C. Camejo, M. Barnes, E. Sellars, C. Cuttrelle, D. Haggerty, J. McCants, A. Mitchell, B. Bostick, M. Hanzo. Moderators: Sister Thomas Gertrude, O.P. and Sister Maura, O.P.

CECILIAN CLUB

PLAYHOUSE



This year the PLAYHOUSE carried out its high ideals of Catholic, cultured performance in its presentation of a Lenten play, "Pilate's Daughter," in Dade County Auditorium, April 11. Members of the Playhouse include: M. Williams, C. Childs, Vice President; J. Bowen, President; B. DeCillis, S. Hodge, R. Rivera, M. Palda, C. Igel, D. Barber, M. Harant, M. Grady, S. Mitchell, A. McCarron, S. Hipskind, C. Wodtke, P. Carr, M. Harding, Director; Sister Grace Alma, O.P.



FOREIGN STUDENTS CLUB

The FOREIGN STUDENTS CLUB provides an opening for foreign students to discuss their international problems and to ask information about campus life and unfamiliar customs. Members include: C. Pino, J. Bodenhamer, M. Gutierrez, M. Gonzalez, B. Lavergne, M. Arguelles, E. Lopez, M. Lluberas, M. Kumata, A. Acosta, President; F. Olba, M. Keith, R. Bustamante, R. Valencia, D. Gelabert, E. Hoenig, E. Cockcroft, J. Kitko, E. Martinez, E. Currier, L. Prieto, C. Camejo, R. Alsina, L. Rappaccioli, R. Rivera, Secretary. Moderator: Sister M. Dorothy, O.P.

The SANTA ROSA SPANISH CLUB fosters friendship and understanding between North and Latin America. Members include: E. Martinez, B. McCarter, R. Alsina, M. Soto, D. Martinez, B. Lavergne, M. Lluberas, Secretary; N. Pique, J. Bodenhamer, E. Cockcroft, E. Perez, M. Gutierrez, M. Gonzalez, R. Valencia, L. Prieto, N. Bunting, N. Campos, B. Keck, V. Keeler, J. Kitko, D. Gelabert, L. Rappaccioli, E. Lopez, M. Keith, President; A. Davis, E. Currier, M. Leiseca, C. Martinez, Treasurer; A. Acosta, N. Pinel, C. Bennett, M. O'Neil, M. Serrao, Moderator; Sister Jean Marie, O.P. Not pictured: D. Barber, J. Daly, B. Keller, B. Pacheco, C. Pino, R. Rivera, J. Trickey, G. Travnikar, M. Morales, C. Camejo.

SPANISH CLUB





SECRETARIAL CLUB

In order to accommodate students who wish to enter the business world, a two-year Secretarial Science course is offered at Barry. The training includes two years of typing, shorthand, accounting, and office practice combined with Catholic cultural education. Among the students in the SECRETARIAL CLUB this year are: Joyce Snowden, Mary Mack, Joanne Renuart, Secretary; Dolores Martinez, Cecile Roussel, President; and Patricia Reilly, Moderator; Sister Eugenia Marie, O.P.

SOCIAL BOARD

Comprised of the Campus Queen, the social chairmen of the four classes, and the social chairmen from other large organizations on campus, the SOCIAL BOARD integrates the student activities on Barry's campus. Most important of these activities is the Coronation ball, of which Janet McGowan was chairman this year. Members include: Mary Kurz, Louise Dorn, Winifred Kine, Shirley Hodge, Campus Queen; Janet McGowan, Patricia Reilly, Gabriella Padelt. Moderator: Sister Mary Jane, O.P.



Campus Life

Through the activities of campus clubs, Barry students have an opportunity of fulfilling one of the aims of the college: "To so develop the social nature of the students that they may live happily, graciously, and unselfishly . . ."

Participation in extracurricular activities gives necessary attention to the social and physical development of the students. It builds up in them a conscientious regard for the laws of complete Christian living.





Cause of Our Joy

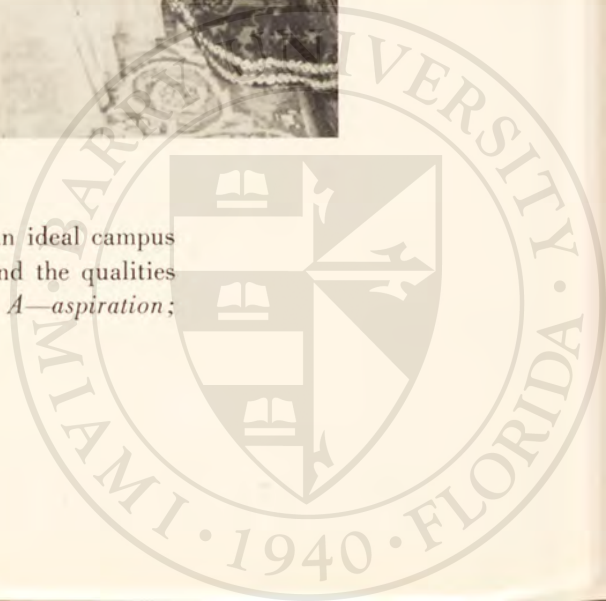


Campus Queen

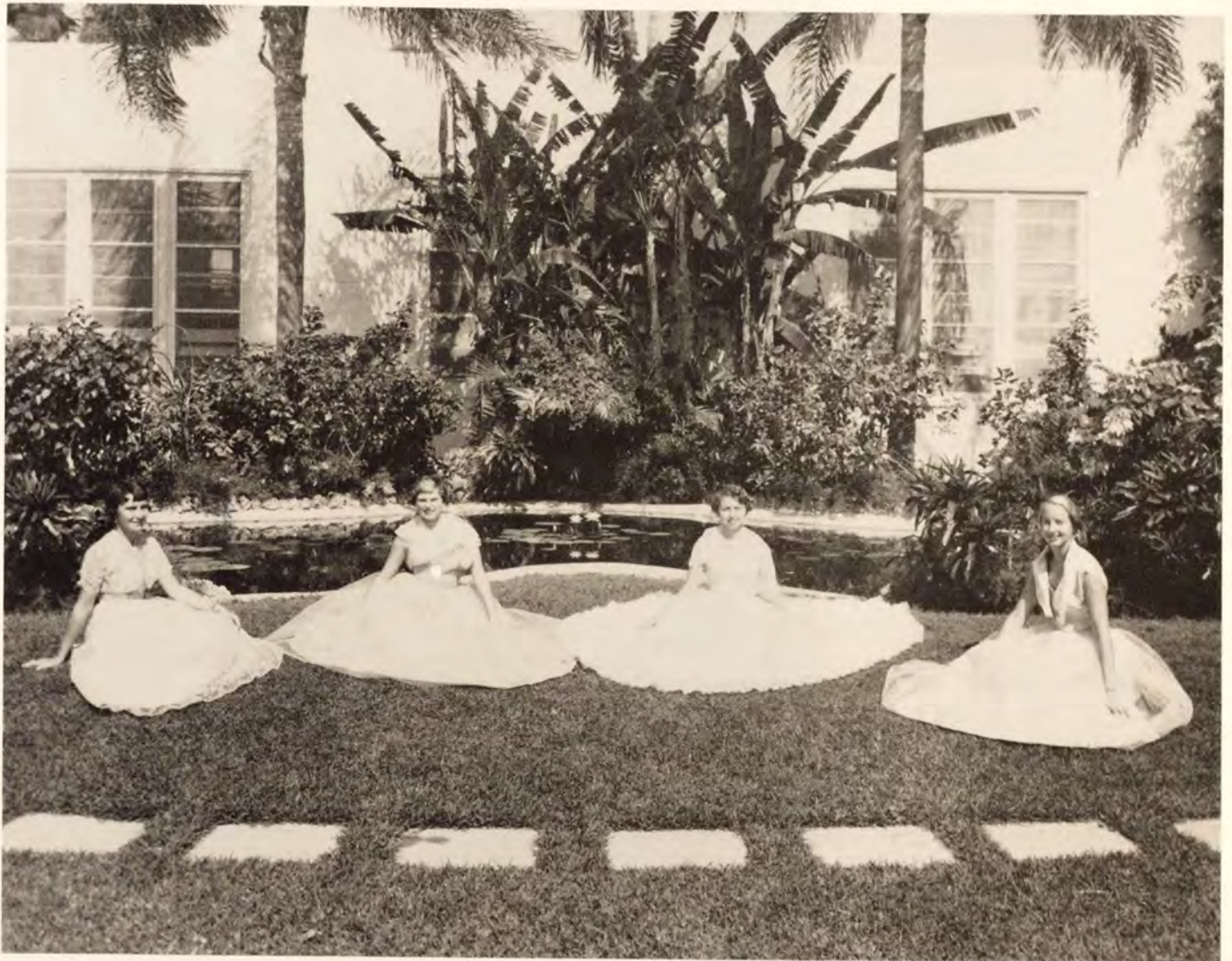


SHIRLEY HODGE

Shirley manifests all the attributes of an ideal campus queen. Within the word "Barry" are found the qualities that our queen possesses: *B—beauty; A—aspiration; R—religion; R—regality; Y—youth.*

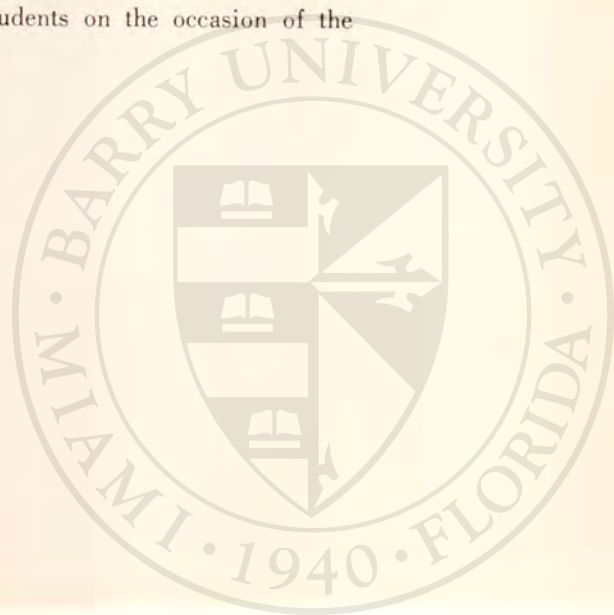


Her Majesty's Court



Pictured in Angelicus Garden are the Queen's four attendants: ROSEMARY GEYER, PATRICIA MIES, ESTHER LOPEZ AND JANET McGOWAN.

The Queen and her court were presented to the students on the occasion of the Coronation Ball, November 7, 1953.



The Student Council

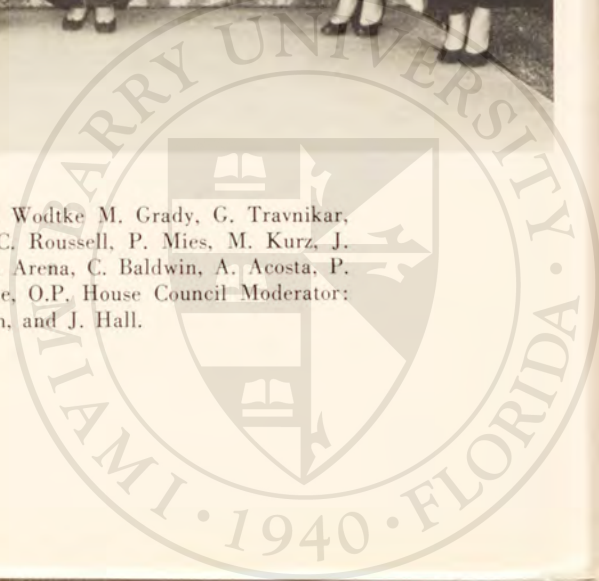


GEORGANN TRAVNIKAR—*President*

The Student Council, composed of the main campus leaders, seeks to coordinate all student organizations and activities in cooperation with the faculty. Under the able leadership of Georgann Travnikar, president, the council members include recognized class leaders who represent their fellow students in an effort to harmoniously direct student plans.



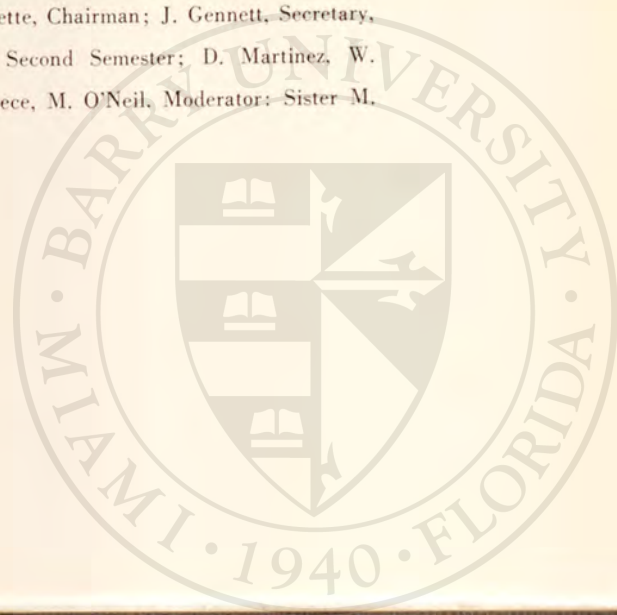
The members of the council are, EXECUTIVE BOARD: C. Wodtke, M. Grady, G. Travnikar, I. Dempsey, and M. Moran. Councillors include: S. Hodge, C. Rousell, P. Mies, M. Kurz, J. O'Brien, P. Ouellette, C. Moyle, P. Estabrook, M. Harding, R. Arena, C. Baldwin, A. Acosta, P. Touscany, G. Doyle, M. Riordan. Moderator: Sister Mary Alice, O.P., House Council Moderator: Sister M. Jerome, O.P. Not pictured: B. Kuzmick, C. Jurgensen, and J. Hall.



House Council



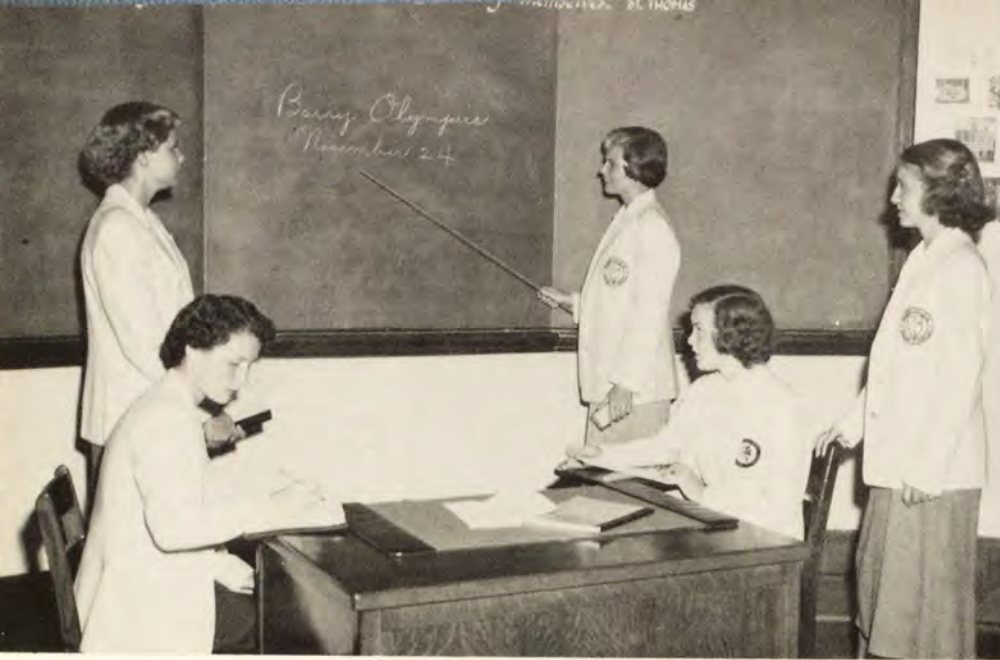
The HOUSE COUNCIL enforces the rules of the dormitories and it cares for house problems in cooperation with the faculty and the Student Council. It also sponsors the get-togethers that help to make residence hall life pleasant and friendly. The members of this year's council are: S. Arnoldson, J. O'Hara, P. Touscany, Vice Chairman; P. Ouellette, Chairman; J. Gennett, Secretary, First Semester; R. Fox, E. Schuster, J. Hall, Secretary, Second Semester; D. Martinez, W. Hennebry, D. Barber, G. Padelt, J. McCants, C. Igel, J. Meece, M. O'Neil, Moderator; Sister M. Jerome, O.P.



ATHLETIC ASSOCIATION

The Athletic Association promotes the social, moral, and physical development of Barry College students, through the sponsoring of athletic and other recreational activities.

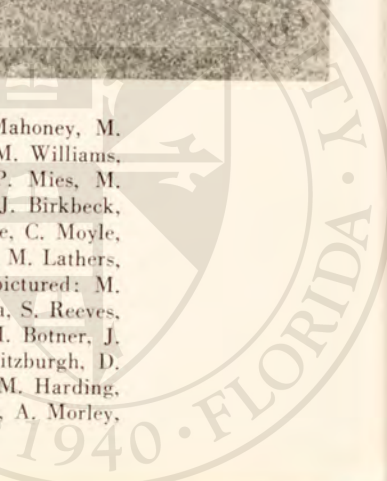
On the calendar for this year were the annual Barry Olympics and the camp-out trip. A fitting termination to an active year was the spring banquet at which awards were presented to outstanding athletes.



OFFICERS of the ATHLETIC ASSOCIATION are: Cecile Roussell, Secretary; Patricia Reilly, Social Chairman; Catherine Wodtke, Vice President; Clarice Moyle, Treasurer; and Patricia Mies, President.



Members of the ATHLETIC ASSOCIATION are: D. Martinez, C. Roussell, R. Mahoney, M. Palda, M. Soto, R. Rivera, R. Alsina, J. Weiller, M. Schlise, E. Gowland, J. White, M. Williams, M. Riordan, R. Anning, A. Davis, J. Mullen, M. Price, B. Keller, P. Stafford, P. Mies, M. Grady, S. Hodge, T. Hendricks, D. Suprenant, S. Mitchell, P. Henle, A. McCarron, J. Birkbeck, M. O'Neil, P. Ace, M. Tischer, B. DeCillis, C. Wodtke, T. Mathes, M. Scott, G. Doyle, C. Moyle, J. Latendresse, P. Estabrook, C. Parramore, P. Ouellette, P. Carr, M. Schmitz, E. Frost, M. Lathers, M. Kersting. Moderators: Sister M. Elaine, O.P. and Miss Margaret Husson. Not pictured: M. McKeeman, J. O'Brien, G. Padelt, L. Paige, I. Patterson, E. Perez, N. Pinel, J. Podesta, S. Reeves, A. Scannell, E. Sellars, D. Wilsey, J. Wright, M. Serrao, M. Barry, J. Bodenhamer, M. Botner, J. Britt, R. Brennan, M. Cline, M. Carney, D. Delaney, M. Dinnen, P. Doherty, R. Fitzburgh, D. Fraher, E. Friedheim, D. Gelabert, L. Gomez, S. Gozo, T. Haley, M. Harant, J. Hart, M. Harding, W. Hennebry, R. Hubertz, C. Jurgensen, E. Keeley, S. Kelly, M. Lluberas, J. Metzger, A. Morley, P. McGaffigan, and J. McGowan.



The COSMOS Club is a social organization of students from New York, New Jersey, Maryland, Delaware, and Washington, D.C. Members include: I. Dempsey, W. Kine, President; M. Kurz, Secretary; P. Stafford, E. Frost, M. Riordan, M. O'Neil, D. Fraher. Moderator: Miss Margaret Husson. Not pictured: B. Kuzmick.



Members of the DEEP SOUTH Club include girls from Tennessee, Kentucky, Alabama, Virginia, North Carolina, South Carolina, and Georgia. Members are: M. Herold, M. Harant, Secretary-Treasurer; M. Coste, President; R. Arena, P. Henle, I. Patterson, M. Price, M. Nott, M. Elkins. Moderator: Sister M. Arnold, O.P.



The members of the NEW ENGLAND club, despite the number of southerners around, manage to maintain their Yankee vigor and Bostonian accent. Members include: S. Davis, D. Haggerty, M. Williams, P. Gosse-lin, A. Morley, President; P. Ouellette, E. Sellars, Secretary-Treasurer; R. Pugh, Vice President. Moderator: Father Louis M. O'Leary, O.P. Not pictured: M. Hurley, J. Britt, P. McGaffigan, D. Surprenant, M. Moran, J. Hall.





The ILLINOIS CLUB is a social group which sponsors dinners, parties, get-togethers, and an annual summer reunion in Chicago. Members include: W. Hennebry, Social Board Representative; M. Schmitz, P. Rowan, President; E. Schuster, D. Lange, J. O'Brien, V. Morrison, E. Keeley, R. Brennan, M. Carney, J. Metzger, J. Meece, Secretary-Treasurer; J. White, R. Anning, C. Jurgensen, M. Buckentin, R. Hubertz, Moderator; Sister Thomas Gertude, O.P. Not pictured: V. Keeler.

The IMPOW Club activities provide an opportunity for the students from Indiana, Michigan, Pennsylvania, Ohio, and Wisconsin to get together. Members include: D. Barone, M. Miller, B. Igel, C. Igel, C. Bennett, E. Gowland, M. Palda, C. Parachek, R. Mahoney, Treasurer; J. Rerucha, President; J. Bowen, Social Board Representative; D. Delaney, Secretary; P. Tousecany, M. McKeeman, C. Polasky, P. O'Melian, N. Hartmann, M. Adiutori, P. Mies, J. Birkbeck, J. Hart, T. Haley, G. Travnikar, S. Hipskind, G. Padelt, D. Barber, R. Fox, P. Reilly, M. Cline, R. Fitzburgh, G. Heitzer, C. Bruder, M. Schlise, P. Ace, M. Stadler, M. Lathers, M. Goodman, M. Deyman, M. Kersting, J. Latendresse, Moderator; Sister Maura, O.P.



The FLORIDA Club members welcome new students, and send out the summer newsletters. Members are: K. Kimbel, L. Ludwig, L. Purnell, B. Burke, B. McCarter, F. Krupp, M. Mack, B. Keller, M. Hollandy, M. Barnes, Vice President; B. Bostick, Treasurer; M. Botner, Secretary; M. Hanzo, President; E. Ricou, M. McKittrick, J. Howard, H. Roguly, S. Hodge, M. Grady, J. Snowden, A. Davis, D. Lynskey, J. Weiller, V. Wawrzyniak, B. DeCillis, S. Mitchell, C. Roussell, M. Scott, J. Renuart, S. Winterer, M. Cliatt, D. Martinez, C. Wodtke, C. Schmitt, N. O'Sullivan, J. McCants, A. Horgan, P. Ralph, J. Wells, P. Estabrook, M. Floyd, Moderator; Sister Mary Alice, O.P. Not pictured: S. Curry, C. Cuttrelle, V. Dropp, T. Mathes, and C. Moyle.



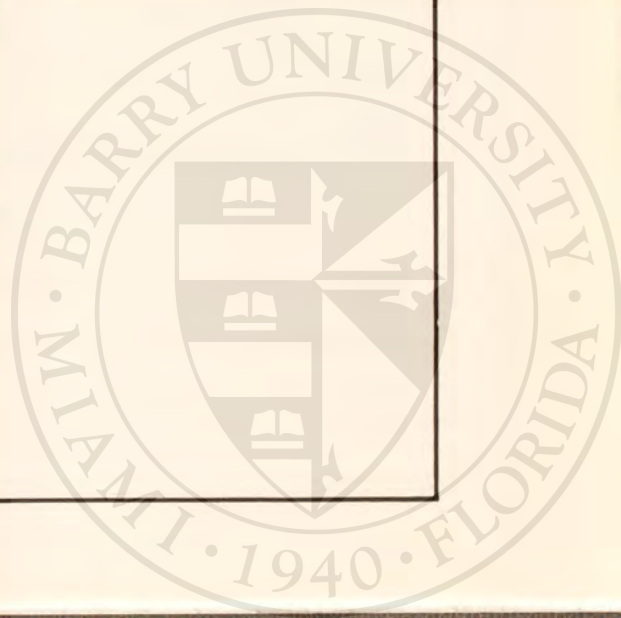
Patrons

- Mr. and Mrs. E. C. Ace
Mr. Rosa Lora Vda. de Alsina
Mr. and Mrs. Joseph Alexander Amrhein
Dr. and Mrs. Jay M. Arena
Mr. and Mrs. Ralph Barone
Mr. and Mrs. John A. Buzolits
Mr. and Mrs. Victor A. Cole
Mr. and Mrs. J. DeCillis
Frank H. Delaney
Mr. and Mrs. L. Walter Dempsey
Henry W. Dorn
Mr. and Mrs. John Fishenko
Dr. Tomas Gonzalez
Mr. and Mrs. Robert T. Gowland
Mr. and Mrs. John Gozo
Mr. and Mrs. T. B. Grady
Mr. and Mrs. Charles F. Haggerty
Mr. and Mrs. W. A. Harding
Mr. and Mrs. Roe J. Hendricks
Mr. and Mrs. Harold L. Hodge
Mr. and Mrs. Steve Hollandy
Dr. and Mrs. L. J. Howard
Mrs. Rosanne F. Huml
Mr. and Mrs. Charles E. Jurgensen
Mr. and Mrs. Joseph N. Kuzmick
Mr. and Mrs. Charles Kurz
Mr. and Mrs. George J. Latendresse
Enrique Lopez Delgado
Dr. and Mrs. L. S. McKeeman
Mrs. Rosina McKittrick
Mrs. C. L. Mahoney
Mr. and Mrs. Frank Malone
Mr. and Mrs. Isidro Martinez
Mr. and Mrs. Brown L. Meece
Dr. and Mrs. J. E. Moran
Mr. and Mrs. James F. Mullen, Jr.
Mrs. Marion H. Nott
Mr. Louis J. O'Brien
Emile O. Ouellette
Mrs. L. Pacheco
Mr. and Mrs. Charles H. Palda
R. A. Parachek
Josefina A De Pinel-Carlos Pinel h.
Mr. and Mrs. Charles R. Reeves
Mr. and Mrs. Angel Rivera
Mr. and Mrs. R. F. Schuster
Mr. and Mrs. R. D. Sheehan
Mr. and Mrs. Joseph L. Stadler
Mr. and Mrs. George Travnikar
Mr. Jose Tourino
Mr. and Mrs. W. C. Wodtke

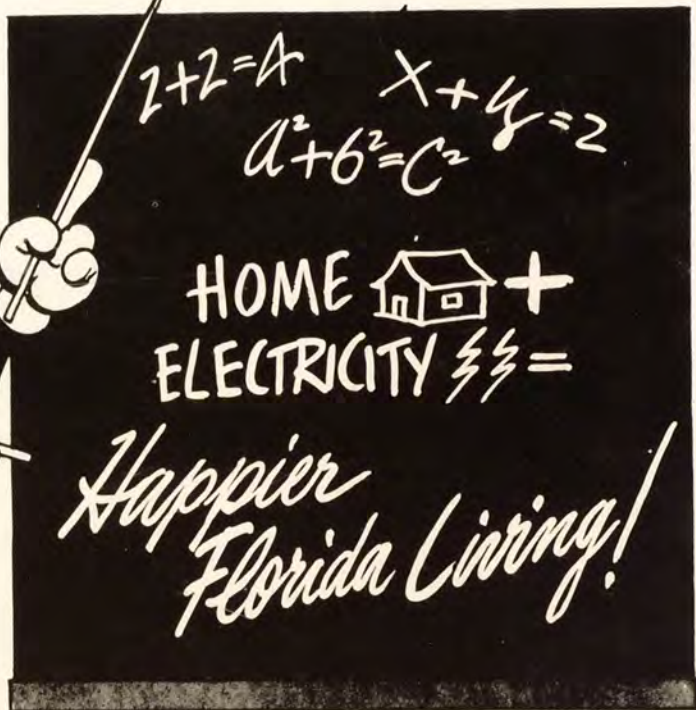
BEST WISHES

**BRENNAN CONSTRUCTION
CORPORATION**

**General Contractors
MIAMI, FLORIDA**



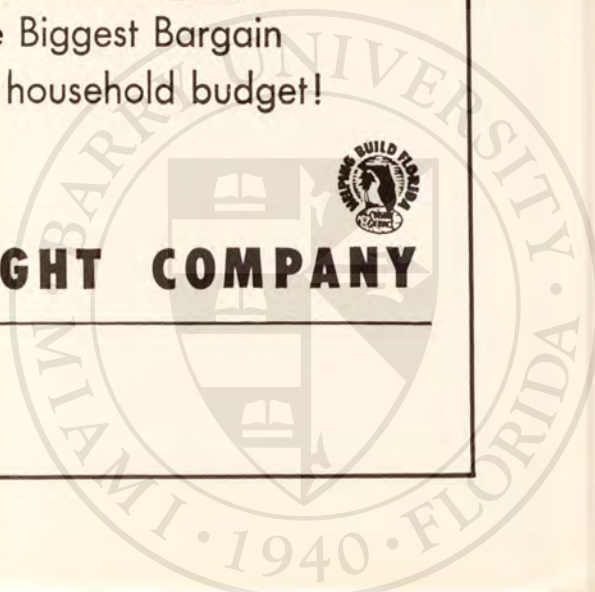
All the Answers!



Sunshine Service does so much... costs so little.
It's the Biggest Bargain
in the household budget!

© Reddy Kilowatt

FLORIDA POWER & LIGHT COMPANY



Compliments
of
**EL TOLEDO
RESTAURANT**

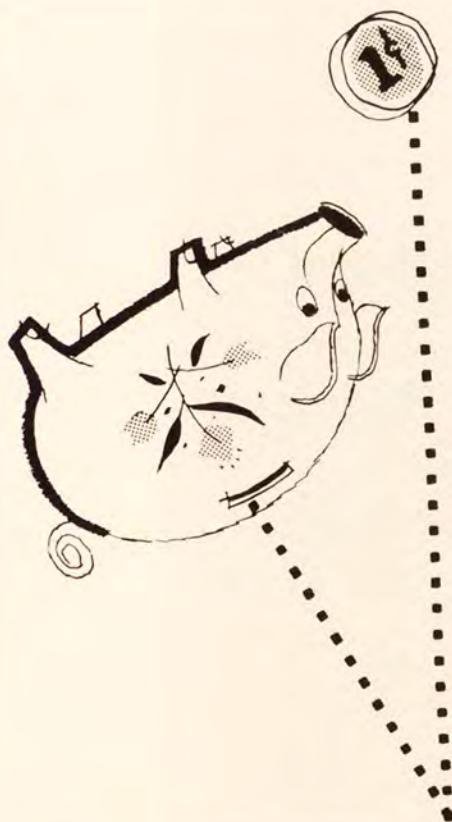
204 Biscayne Boulevard

Tel. 2-8833

Thanks to All the Barry Girls

from Joe and Frank Miguel

the little things
count



"Watch the pennies and the pounds will take care of themselves" is an axiom true of far more things in life than money. A kind word spoken, an appointment promptly met or a small duty well executed often make the difference that spells success.

We, at Florida National, give careful attention to every detail of financial service. You are cordially invited to visit us and to learn more about banking facilities which may become so important to you now and in later life.

The
FLORIDA NATIONAL BANK
and Trust Company
At Miami

Alfred I. duPont Building

MEMBER
FEDERAL DEPOSIT
INSURANCE CORP.

MEMBER
FEDERAL RESERVE
SYSTEM

MEMBER
FLORIDA NATIONAL
GROUP

Compliments of

The Renuart Lumber Yards, Inc.

"EVERYTHING TO BUILD ANYTHING"

LEMAN STUDIO, INC.

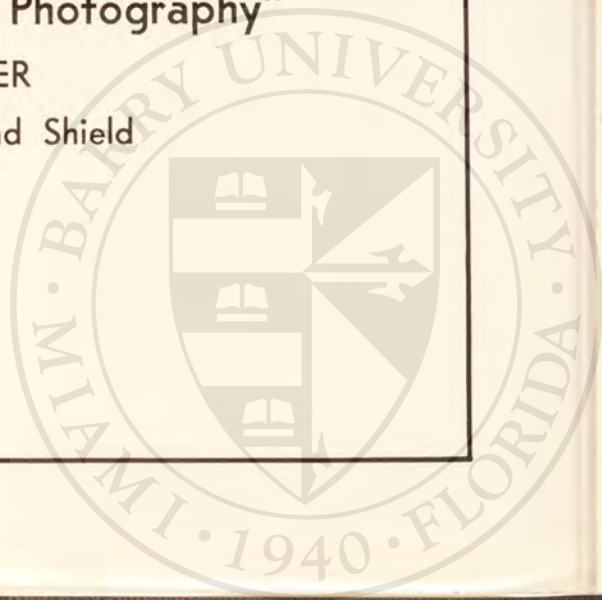
267 Alhambra Circle

Coral Gables, Florida

"Highest Quality Annual Photography"

PHOTOGRAPHER

for the 1954 Torch and Shield



"Be Great
in Little Things"

ST. THERESA
The Little Flower

THE FRESHMAN CLASS

Best Wishes to the
Seniors
from

T H E S O P H O R E S

Congratulations
Graduates of 1954

from the
JUNIOR CLASS

Fare Ye Well,

O Halls of Barry!

THE SENIORS of 1954



**MIAMI SHORES
BAKERY**

BIRTHDAY and WEDDING CAKES
OUR SPECIALTY

Phone 7-5515

9714 N. E. 2nd Avenue
MIAMI SHORES, FLA.

The Girls from Barry
Are Always Welcome at the—

**VILLAGE
BOOK STORE**

9535 N. E. Second Ave.

Featuring a Complete Line
of the Finest in - - -

GIFTS * STATIONERY * RECORDS
GREETING CARDS * PLAYERS *
BOOKS

Compliments
of

**THE
MIAMI SHORES
PHARMACY**

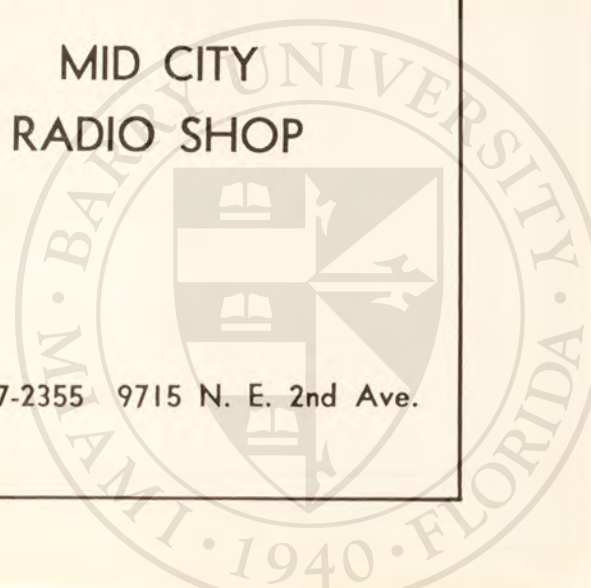
PRESCRIPTIONS
9540 N. E. 2nd Ave.
Phone 7-1585

Radio Trouble?

FREE CHECK-UP
PICK-UP and DELIVERY
Three Months Unconditional
Guarantee

**MID CITY
RADIO SHOP**

Phone 7-2355 9715 N. E. 2nd Ave.



CONGRATULATIONS

Crandon
Wholesale
Drug Co.

CONGRATULATIONS

and
Best Wishes
to the
Graduates of 1954

RICHARDS

Phone 2-1796

Florida
Dairies Co.



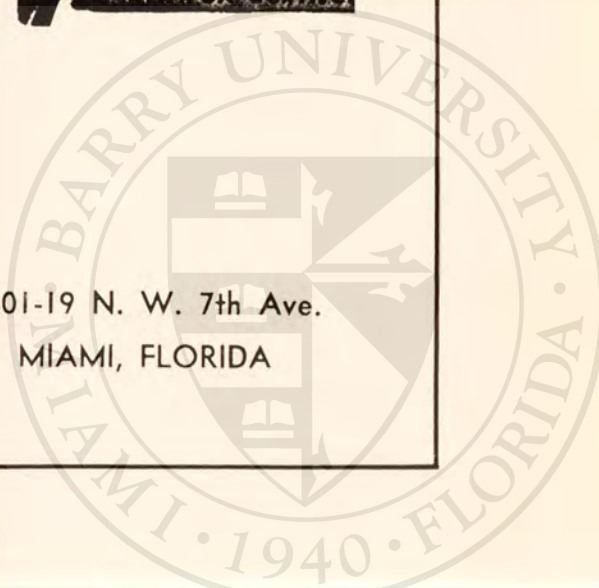
Phone 2-2621



QUALITY
DAIRY PRODUCTS



1601-19 N. W. 7th Ave.
MIAMI, FLORIDA



Buy The Best For Less At . . .
THE FABRIC MART

Dress Fabrics* Linens
and Drapery Materials
8200 N. E. 2nd Ave.

Miami, Florida Phone 89-1362

We Carry
"Simplicity Patterns"

**Little River
Lumber Yard**

LUMBER and BUILDING MATERIAL
PAINTS and HARDWARE
Phone 7-2404

7737 N. E. 2nd Avenue

Registered Jeweler
American Gem Society

KIRK STERLING
BLAIR F. WATSON, Jewelers
Silversmiths

7952 N. E. 2nd Avenue
"LITTLE RIVER"
Tel. 78-3214
MIAMI, 38, FLORIDA

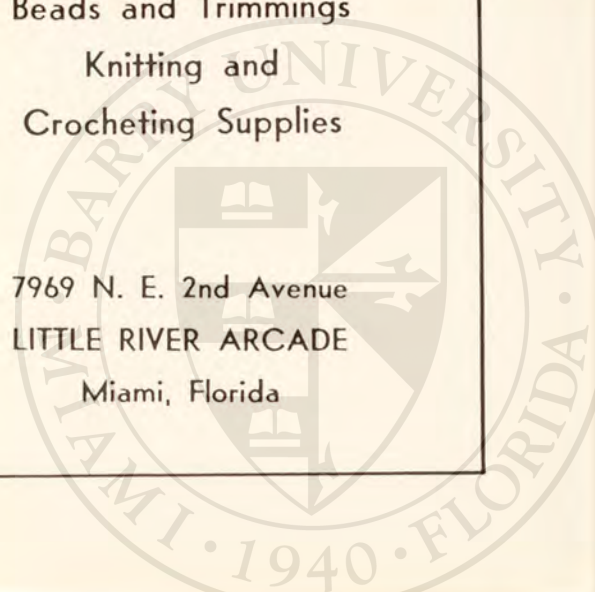
QUALITY DIAMONDS
WATCHES—JEWELRY

Free Instruction Tel. 84-3209

**CORINNE'S
HOUSE of NEEDLECRAFT**

Beads and Trimmings
Knitting and
Crocheting Supplies

7969 N. E. 2nd Avenue
LITTLE RIVER ARCADE
Miami, Florida



TO KEEP WELL . . .

The most logical and dependable pharmacy
for your prescriptions and family needs.

TO LOOK WELL . . .

We feature complete lines of Elizabeth Ar-
den, Helena Rubinstein, Revlon, Marcelle,
Faberge, Lanvin, Lucien Lelong, Lenthéric,
and all leading Toiletries.

CENTER PHARMACY Inc.



9723 N. E. 2nd Ave. Phone 89-2924
MIAMI SHORES

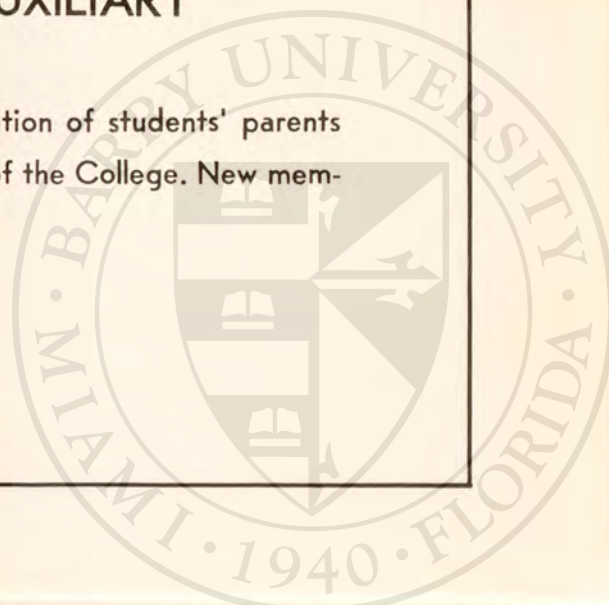
Compliments of

PHILBRICK FUNERAL HOMES

Congratulations
Graduates of 1954

BARRY COLLEGE AUXILIARY

The Barry College Auxiliary is an organization of students' parents
and friends interested in the development of the College. New mem-
bers invited.



Compliments
of

KALER PRODUCE CO.

**MIAMI SHORES
DRESS SHOP**

9710 N. E. 2nd Ave.
MIAMI SHORES, FLORIDA

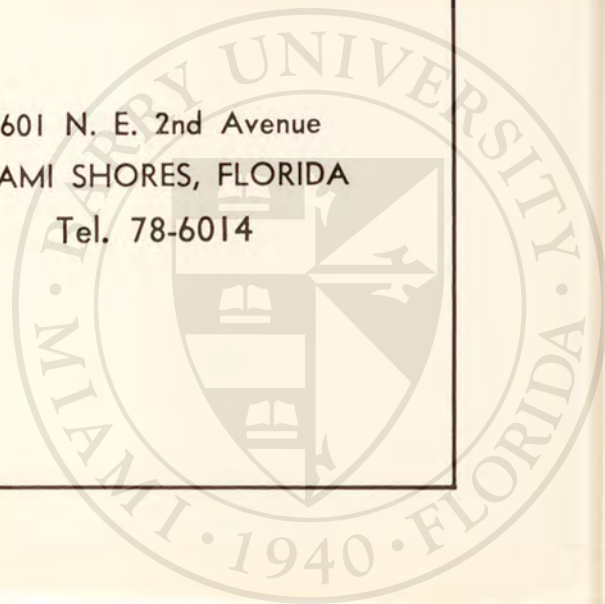
**MIAMI SHORES
5 and 10**

9531 N. E. 2nd. Ave.
Miami Shores, Florida

RAYMOND M. CARPER, Prop.

**MIAMI
SHORES
CABS**

9601 N. E. 2nd Avenue
MIAMI SHORES, FLORIDA
Tel. 78-6014



COMPLIMENTS
of

Great Southern Trucking Company

64 N. E. 20th Street
MIAMI, FLORIDA

McCORMICK BOYETT

PLUMBING CONTRACTORS

We Specialize in
Repairs

Dial 7-4793 Dial 7-6081

NIGHTS and SUNDAYS

48-8307 or 7-0355

Retail Sales of
PLUMBING SUPPLIES
and FIXTURES

9443 W. Railroad Avenue
MIAMI SHORES

Our BRIDE'S BOOK is Now Open!

Come in and Register

Your Choice

In Sterling—No Obligation!

INTERNATIONAL STERLING
HEIRLOOM STERLING
LUNT STERLING
COMMUNITY STERLING
ONIEDA STERLING
MANCHESTER STERLING
ALVIN STERLING
ROGERS STERLING

Start Your Sterling Set Now!

Easy Terms—Pay 49c Weekly

LITTLE RIVER JEWELRY

8001 N. E. 2nd Ave.

Phone 7-4294



BUSINESS PATRONS

Biscayne Exterminating Service, Inc.

Borden's Dairy

Dari Creme

Eli Witt Cigar Company

Ideal Pictures Company

McArthur Jersey Farm Dairy

Minna Rose Styles

The Village Inn

Whelan's



COMPLIMENTS
of

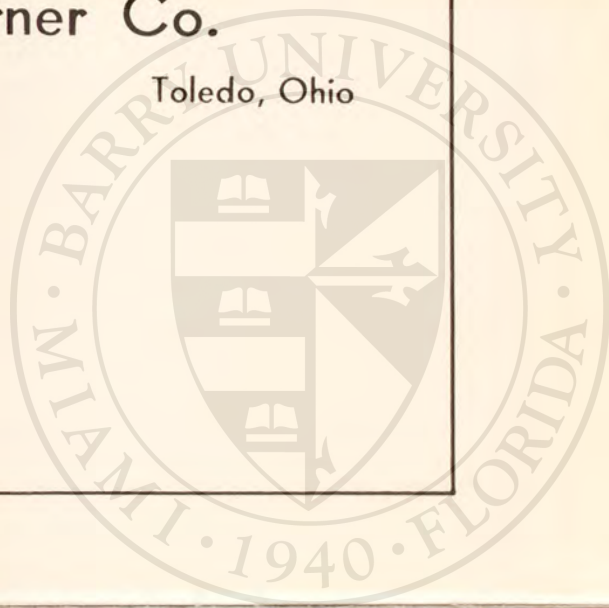
COLUMBIA BURNER CO.

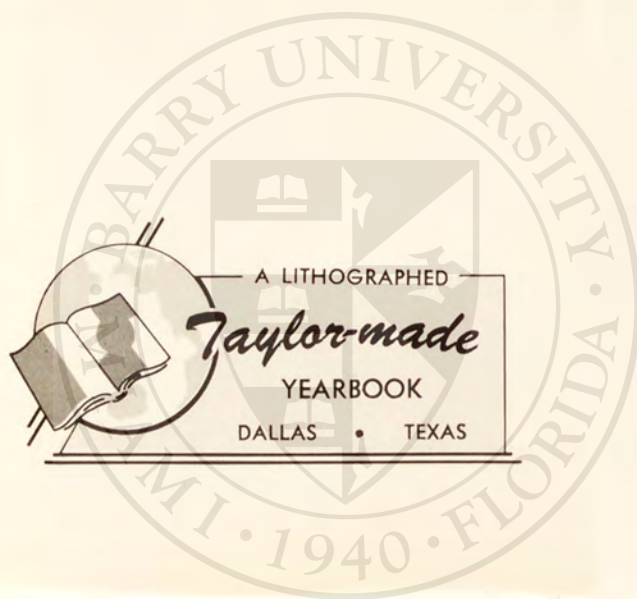
MANUFACTURERS
of
Gas Conversion Burners
Domestic-Commercial

The Columbia Burner Co.

729 Ewing Street

Toledo, Ohio





A LITHOGRAPHED

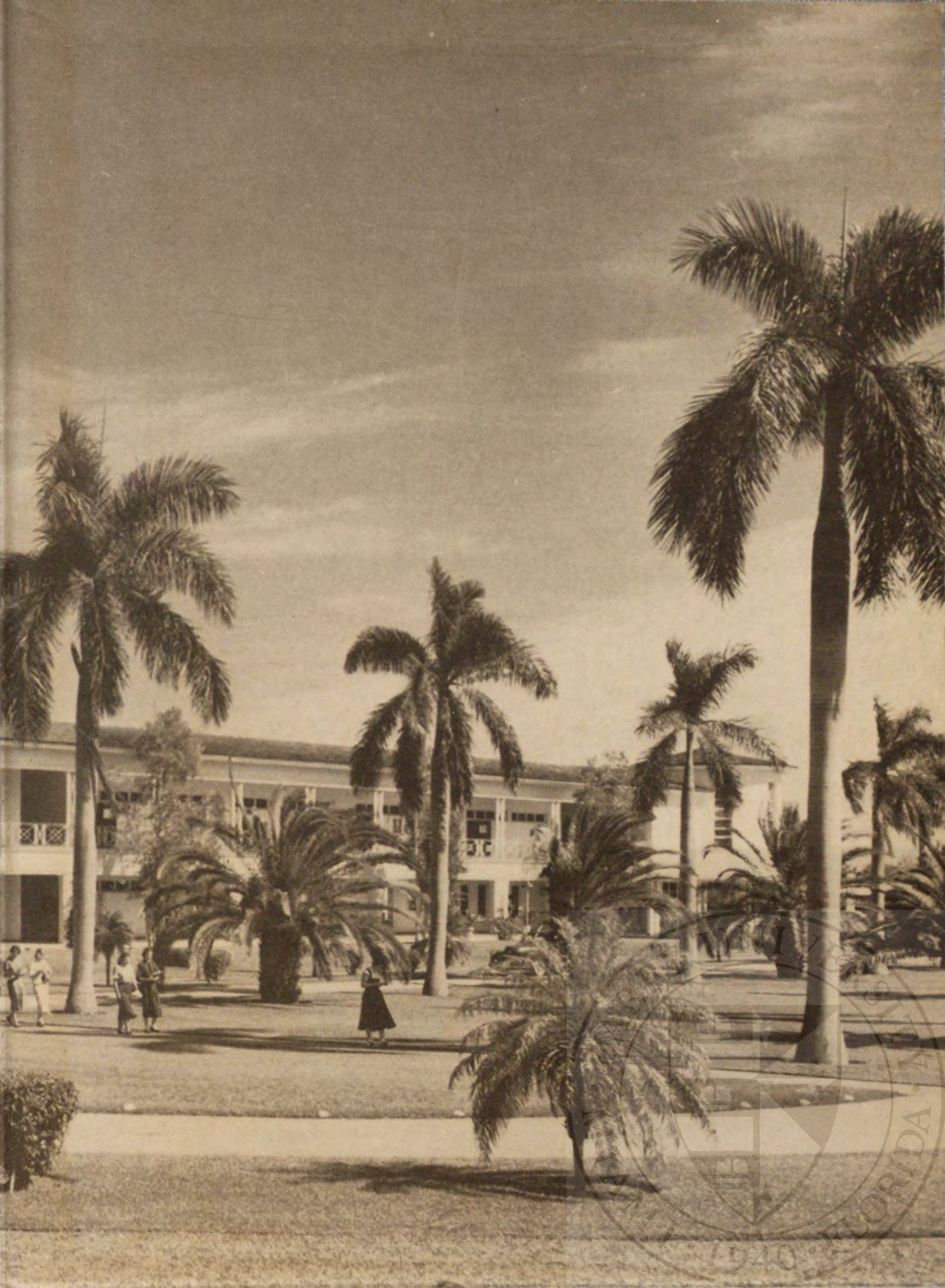
Taylor-made

YEARBOOK

DALLAS • TEXAS



THE UNIVERSITY OF FLORIDA
1940



UNIVERSITY OF FLORIDA
1940

